

Fishin' Buddy 4200™ Operations Manual



BOTTOM LINE
See What You've Been Missing

TABLE OF CONTENTS

Introduction	2
Getting Started	3
How to Install the Batteries	3
How to Attach the Mounting Bracket	4
Buddy Functions and Features	6
POWER / MENU button.	6
Set and Adjust Features	7
Fishing with the Buddy	14
How Your Buddy Works	14
Reading the Bottom Graph	15
Finding Fish with the Sidefinder	17
Ice Fishing	20
Specifications	21
Accessories and Replacement Parts	22
Maintenance	20
If You Are Having Problems	23
Bottom Line Warranty and Service Policy	26
Figures and Illustrations	
Fishin' Buddy with Battery Compartment	3
Mounting Bracket	4
Fishin' Buddy 4200™ Display	12
Bottom SONAR beam (cross-section)	14
Buddy transducer at end of shaft	17
Sidefinder coverage near steep and mild shorelines	18

INTRODUCTION

Congratulations on your purchase of the BottomLine® Fishin' Buddy 4200™! You now own one of the world's most portable fishfinders, with completely self-contained electronics offering BottomLine's advanced high-clarity bottom graph plus water temperature to let you make the most out of your boating and fishing experience. Using the Buddy is easy and fun. Just attach the C-clamp mounting bracket to your favorite boat, canoe, dinghy or even to a dock, and then start fishing. The Buddy is an ideal tool for ice fishing and float tubing as well.

Before installing your Fishin' Buddy 4200™, please make sure that the following parts are included in your installation kit:

- Fishin' Buddy 4200™ display unit with transducer.
- C-clamp mounting bracket.
- This Operations manual and warranty card.

GETTING STARTED

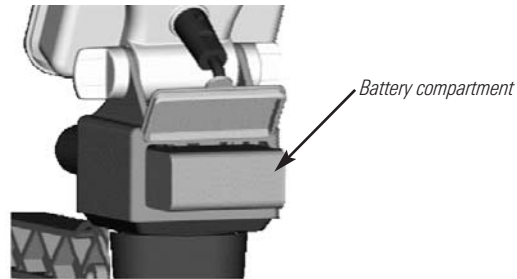
The Fishin' Buddy 4200™ is easy to use:

1. Install fresh batteries.
2. Attach the mounting bracket to a stable surface.
3. Slide the Buddy into the bracket.

Then press the power button and start fishing!

HOW TO INSTALL THE BATTERIES

The Buddy requires three alkaline "D" size batteries (not included) for operation. For easiest battery installation, lay the Buddy down on a flat surface, with the open battery compartment facing upward as shown. Place the batteries in the battery holder following what is shown in the holder itself. Then place the battery holder in the compartment and close the lid, making sure to lock it tightly.



Fishin' Buddy with battery compartment

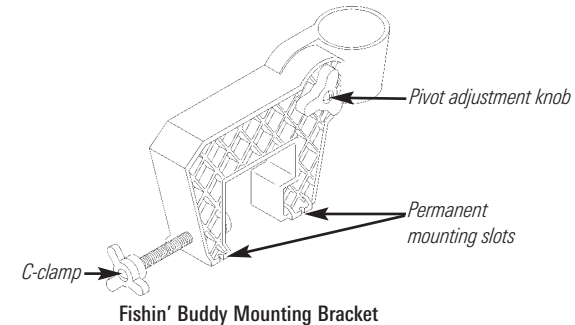
*When the batteries are fully spent (no longer can hold a charge), the screen will clear and the word **BATTERY** will be displayed for 10 seconds before the Buddy will turn itself off.*

CAUTION: Always remove discharged batteries promptly and before periods of storage to prevent potential damage due to battery acid leakage. Failure to do so may void your warranty.

HOW TO ATTACH THE MOUNTING BRACKET

The Buddy unit should be mounted where it will be most visible and accessible. There are two ways to attach the Buddy mounting bracket: the built in C-clamp mounting bracket or the four permanent mounting slots in the base. The mounting slots accept 1/4" screws or bolts (not included). Use the following information when considering a mounting location:

- The Buddy's transducer will not work when it is not in the water.
- Turbulent water or water filled with air bubbles can cause interference or prevent the transducer from operating.



Fishin' Buddy Mounting Bracket

The C-clamp mounting bracket is the most versatile and portable way to mount the Buddy to your boat. Loosen the C-clamp by turning it counter-clockwise and then place the bracket around the gunnel or transom, resting it on the top surface (or as far down as possible). Then tighten the C-clamp by hand.

CAUTION: Do not over-tighten the C-clamp or permanent damage may occur. If the mounting bracket is not stable after tightening by hand, try repositioning the bracket.

Start fishing!

The Fishin' Buddy is designed to run automatically with just a press of the power button. To get the most out of your Buddy, read the next section on functions and features.

BUDDY FUNCTIONS AND FEATURES

The best way to get familiar with your Buddy is to power-up in demo mode and start pressing buttons. You will not hurt anything by doing so, but you may lose or change some settings accidentally. **Don't worry.** Your Buddy has a reset feature that restores everything back to factory settings.

POWER ON AND OFF, DEMO MODE

POWER ON - Press and release the POWER button.

DEMO MODE - While powering on the Fishin' Buddy 4200, keep the **POWER** button pressed until the words SIMULATOR and REAL appear on the screen. Use the **UP** and **DOWN** buttons to move the fish symbol in front of your selection, then press the **MENU** button to continue.

POWER OFF - Press and hold the **POWER** button until the display is blank.

NOTE: The Fishin' Buddy 4200™ remembers your previous settings every time you power it on again (this does not happen in demo mode).

SET AND ADJUST FEATURES

After power-up, features can be adjusted using the following procedure:

1. Press the **MENU** button to display feature adjustments.
2. Press the **LEFT** or **RIGHT** button to find the feature you want to adjust.
3. Press the **UP** or **DOWN** button to adjust the feature (see specific instructions below for Range and Depth Alarm).
4. Press the **MENU** button to restore the normal display.

*Tip: When no menu is displayed, press and hold the **UP** or **DOWN** button to freeze the graph.*

CONTRAST - Contrast is the darkness or lightness of the display. Both your viewing angle and the ambient temperature affect the contrast.

CAUTION: Facing the screen toward the sun for extended periods may cause the display to reach its upper temperature limit and become black. If this occurs and you cannot adjust it lighter, immediately cover the screen or turn it away from the sun.

LIGHT - The Fishin' Buddy 4200™ has a display backlight for use when there is not enough daylight to view the screen. The backlight also generates heat and can be used to help warm the display in cold weather.

GAIN - The gain control sets the graph's overall sensitivity to echoes. Generally, a higher gain number means that more fish and structure are shown. Lowering the gain may help reduce interference caused by trolling motors and other sources of noise.

TIP: Use as much gain or as little gain as you want, but remember that the bottom depth readout may not work under all settings.

SCC - The Surface Clutter Control reduces undesirable signals on the graph. Such signals may include surface clutter (created by turbulence around the transducer), thermocline, air bubbles, algae bloom, etc. Turn on SCC if these signals inhibit the display of the bottom.

NOTE: Turning on the surface clutter control may inhibit shallow-water bottom readings.

ICE MODE - The ice fishing mode control overrides the screen clutter control and increases the gain significantly to help display smaller objects. Although this improves the picture in most ice fishing situations, it may increase clutter and is normally turned off for other types of fishing.

RANGE - The bottom range control allows you to set how deep the bottom graph will display. The bottom range is displayed in the upper-right and lower-right corners of the graph.

In automatic mode, the Fishin' Buddy 4200™ sets the graph range to graph from the water surface down to just below the bottom.

AUTO - This symbol in the upper-right corner of the display indicates automatic range mode.

You may want to set the range manually if the bottom reading becomes unreliable or if you are only interested in seeing the top portion of the water. In this case, the **AUTO** symbol will disappear indicating that you set the range yourself.

In bottom-tracking mode, the Fishin' Buddy 4200™ sets the range to graph the 10 ft (3 m) of water just above the bottom. This zoomed-in graph is useful for determining bottom features and for marking fish lying close to the bottom.

BOTT - This symbol in the upper-right corner of the display indicates bottom-tracking mode.

- Operation: Press the **MENU** button, then press the **LEFT** or **RIGHT** button until RANGE BOTTOM appears. *Press and release* the **UP** or **DOWN** button to select automatic or bottom-tracking mode, or *press and hold* **UP** or **DOWN** to set a manual range, then press **MENU** to clear the menu.

NOTE: *This feature enables you to put the entire screen into bottom track mode.*

SCREENS - The screen menu lets you choose between display combinations: Bottom graph only (NORMAL), Bottom graph and large readouts (STATUS), Bottom graph and a single extra large value (FIXED), or Bottom graph and an extra large value ROTATING through the available data (depth and temperature).

TIP: *Changing from ROTATING to FIXED mode results in the last value shown during ROTATING mode to be a FIXED display on screen.*

GRAPH SPEED - The graph speed controls the maximum rate that the graph is shifted to the left. This determines how much history is in the graph and therefore the shape of fish and bottom structure.

TIP: *The graph speed slows down automatically in deeper water, because it takes more time for echoes to return.*

DEPTH ALARM - The depth alarm sounds when the depth (from the transducer to the estimated bottom) is less than the setting.

- Operation: Press the **MENU** button, then press the **LEFT** or **RIGHT** button until DEPTH ALARM appears. *Press and hold* the **UP** or **DOWN** to activate the alarm and set the depth. *Press and release* the **UP** or **DOWN** button to turn the alarm on and off.

FISH ALARM - The bottom fish alarm chimes and the depth of the fish is also shown if there is room on the display.

NOTE: *A timer function prevents the alarm from chiming too often.*

FISH D'TECT - The bottom fish alarm chimes and displays fish symbols for echoes that are likely to be from fish. The depth of the fish symbol is also shown if there is room on the display. Three sizes of symbols are used to indicate the relative signal strength of the echo, with the largest representing the strongest echo.

 - These symbols at the top of the screen indicate what strengths you have chosen for the fish alarm.

NOTE: *A timer function prevents the alarm from chiming too often.*

TRUE VIEW / GRAY VIEW - This feature allows you to choose how the Fishin' Buddy 4200™ uses grey shades to show bottom, fish and other objects in the water. True View™ is the natural display that displays weak echoes in light shades and strong echoes in dark shades. Gray view displays the strongest echoes in gray to more clearly define the bottom.

ICE FISHING - The ice fishing mode control overrides the screen clutter control and increases the gain significantly to help display smaller objects. Although this improves the picture in most ice fishing situations, it may increase clutter and is normally turned off for other types of fishing.

UNITS - The Fishin' Buddy 4200™ can display in either imperial (U.S.) or metric units for depth and temperature.

RESET - This feature resets most menu settings back to the factory defaults. Try using Reset when the Fishin' Buddy 4200™ does not appear to be working properly and you are not sure if the problem is in the settings. When the Reset menu is on the screen, press the **UP** or **DOWN** button to reset the settings.

SIDE - This feature will allow the Sidefinder to be on or off.

SIDE RANGE - The Sidefinder Range control allows you to set how far to the side the Fishin' Buddy 4200™ will display fish. If you are casting, you'll probably want to choose a close range to get the maximum detail in the cone. The Sidefinder Range is displayed in the upper-left corner of the display.

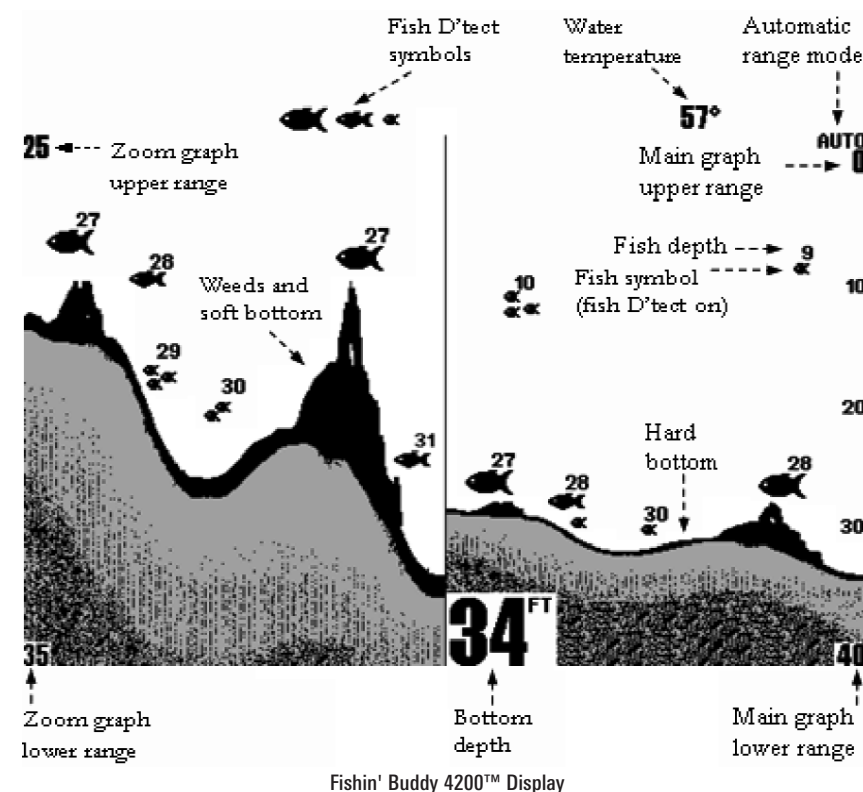
- Operation: Press the **MENU** button, then press the **LEFT** or **RIGHT** button until **SIDE RANGE** appears. *Press and release* the **UP** or **DOWN** button to select a manual range, then press **MENU** to clear the menu.

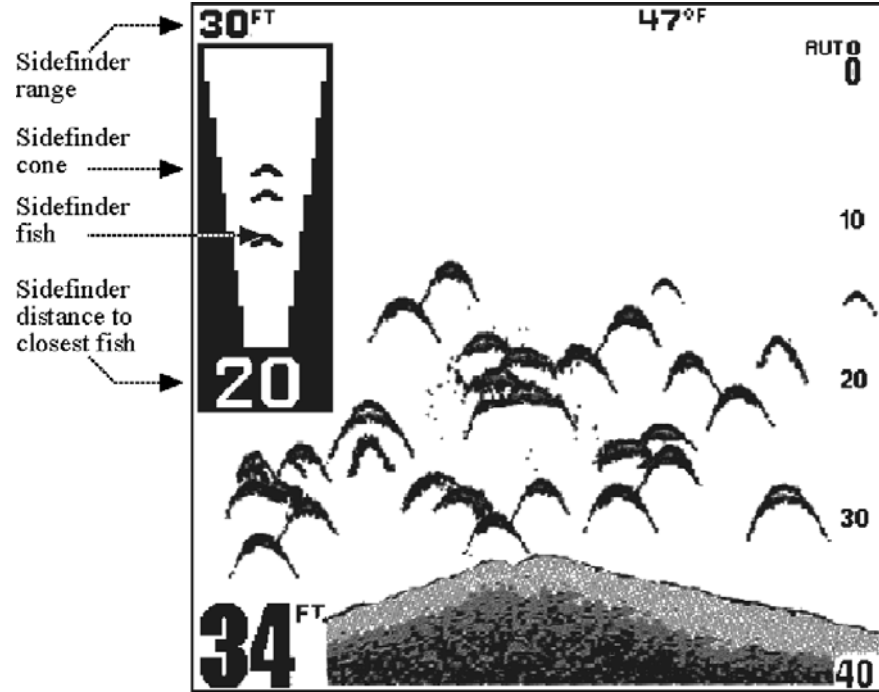
SIDE FILTER - The Sidefinder Filter is used to reduce false markings from submerged objects like pier poles and submerged branches. The filter is best used around docks and other shoreline structures where false markings might occur. In most situations, and especially in open water, the best performance is obtained with the filter turned off.

- Operation: Press the **MENU** button, then press the **LEFT** or **RIGHT** button until **SIDE FILTER** appears. Press and release the **UP** or **DOWN** button to turn the filter on or off, then press **MENU** to clear the menu.

 - This symbol in the upper-right corner of the display indicates that the Sidefinder Filter is on.

NOTE: *The Sidefinder will show fewer fish with the filter on.*





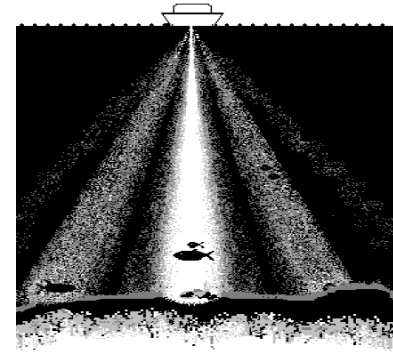
Fishin' Buddy 4200™ Display

FISHING WITH THE FISHIN' BUDDY 4200™

HOW YOUR FISHIN' BUDDY 4200™ WORKS

The Fishin' Buddy 4200™ uses active SONAR, short for Sound Navigation and Ranging, to locate and identify objects in the water. The transducer sends out short bursts of ultrasonic sound waves into the water and then listens for echoes to come back from objects and the bottom. The further away the object or bottom is, the longer it takes the echo to return.

These ultrasonic waves "illuminate" the water, forming a beam that is strongest in the direction that the transducer is pointed. Weaker side-lobes split off from the main beam and with enough gain can be used for finding fish as well. You can calculate the approximate diameter of the main beam on the bottom as the depth divided by six.



SONAR beam (cross-section)

READING THE GRAPH

The bottom graph is created by drawing all of the echoes from a single burst in a vertical column on the display, with the echoes from deepest objects drawn lowest on the display. After all the echoes from the burst are drawn, the graph is shifted to the left and the process is repeated.

Grayscale

The Fishin' Buddy 4200™ uses shades of gray to generally indicate the size or density of objects in the graph. In fact, it is the strength of the echo that determines how it will be shaded. Small fish and light weeds typically return weak echoes, where a hard bottom returns strong ones. This can be very useful when you want to know more about the areas you fish. The Fishin' Buddy 4200™ can display these gray shades in either the True View™ or Gray View modes.

The True View™ display is natural and shows the weaker echoes in lighter shades and the stronger echoes in darker shades. A clear hard bottom will appear as a thick black area, while a soft or weed-covered bottom is usually thinner and displayed with grey on top of the black. Small fish and light weeds are shown in grey. Strong thermal clines or large fish directly under the transducer may appear black.

Gray View is used to more clearly define the bottom. In this mode, the strongest echoes are shown as a gray shade. A clear hard bottom will appear as a thin black line above a thick gray area, while a soft or weed-covered bottom will appear as a black area above a thinner gray. Small fish and light weeds will typically be shown in black. Strong thermal clines or large fish directly under the transducer may appear gray.

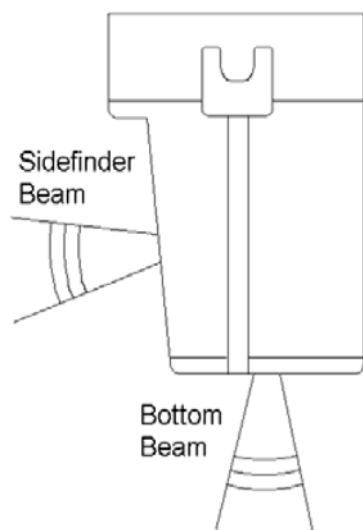
Fish

To view the natural echoes from fish and other objects in the water, turn the fish alarm symbols off. Many fishermen have heard that an arch is a good way of locating fish, but other objects you troll across may also produce arches.

A better way of determining fish is to watch for subtle patterns on the graph. Solid horizontal lines across the screen are often fish hovering under the transducer. These lines may go up and down, suggesting some movement if they are fish. Generally, thicker marks come from larger fish. Clouds of pixels are often schooling baitfish. Groups of diagonal lines are usually bubbles rising steadily up from the bottom. As you get more familiar with the Fishin' Buddy 4200™ and the water that you fish in, you will pick out many other patterns as well.

FINDING FISH WITH THE SIDEFINDER®

The Fishin' Buddy 4200™ uses Bottom Line's patented Sidefinder® technology to scan where you cast and, with good accuracy, determine which echoes are from fish and which are from other objects. Fish that are startled by your boat and move away would not be seen with a conventional depthfinder. Sidefinder® technology can provide up to a 60 times improvement in fish finding coverage in shallow water.

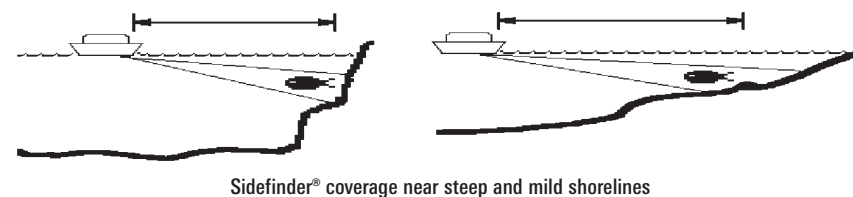


Fishin' Buddy Transducer at end of shaft

The Sidefinder® SONAR beam comes out from the flat side of the transducer housing at the bottom of the shaft. When searching for fish, make sure the flat side points toward the area of your search.

Sidefinder - Viewing the Shoreline

Each shoreline has its own unique characteristics. The Fishin' Buddy 4200™ can see all the way up to the shore when the drop-off is sharp or if there are ledges. When the slope of the bottom is gentle, the Buddy will not see all the way to the shoreline. The Buddy can normally detect spawning fish that build beds near the shoreline. Direct experience with each shoreline will teach you the Buddy's capabilities.



Sidefinder® coverage near steep and mild shorelines

Sidefinder® - Weeds and Other Obstructions


The best way to understand how your Buddy "sees" is to imagine that the transducer is a flashlight and the water is clear. If you are trying to "see" into weeds, the ability of your flashlight beam to penetrate depends on the thickness of the weeds. If the weeds are thin, your flashlight beam will penetrate further. If you are trying to see past an underwater rise to view the shoreline, it is a question of how high the rise is. You can "see" the shore if you can shine your flashlight beam above the rise and illuminate the shore in the background.

Sidefinder® - False Markings

Occasionally, the Buddy may falsely mark objects other than fish. This can occur with air bubble streams from nearby boats or air filled swim ladders. This can also occur when the Buddy is aimed at a cement or rock wall due to a double reflection effect. The Fishin' Buddy 4200™ is designed to eliminate false readings, especially with the filter on. Due to the strength of the signal, it is possible to fool and thus, get an occasional false reading if the unit is working from a stationary, non-moving boat or a pier. The Sidefinder® filter allows the Buddy to be much more selective in marking fish. Use the filter around docks and other structures in the water. The Buddy will display fewer fish with the filter on.

Sidefinder® - Interpreting the Display

CONE - The transducer cone graph on the screen represents the area and the direction in which the Fishin' Buddy 4200™ is searching for fish.

FISH - The  symbols displayed in the graph shows where the Buddy has marked fish. Even though a fish may quickly move out of the transducer beam, all fish symbols are displayed for at least five seconds. The symbol does not indicate the size of the fish.

DISTANCE TO CLOSEST FISH - The big digits at the bottom of the cone indicates the distance to the closest fish. If no fish are found, no digits are displayed. As with the fish symbol, when a fish is marked, the big digits remain on the display for at least five seconds.

ICE FISHING

The Buddy is ideal for ice fishing. Simply install the bracket on a long flat piece of wood, then mount the Buddy on one end of the wood piece and place your tackle box (or some other weight) on the opposite end to ensure stability. Be careful not to get water between the mounting clamp and the main unit because these two pieces could freeze together.

You may also purchase the Buddy Ice Fishing Bracket #01-9063 where you purchased your Fishin' Buddy 4200. If the dealer does not carry this item, contact www.bottomlinefishfinders.com.

***NOTE:** In cold weather, the Buddy's lights may be used to help warm the LCD display, at the expense of shorter battery life.*

ACCESSORIES AND REPLACEMENT PARTS

BOTTOM LINE offers a full line of accessories and replacement parts. These items should be available where you purchased your Fishin' Buddy 4200. If the dealer does not carry an item you want, you may be able to order it at www.bottomlinefishfinders.com.

MAINTENANCE

Your Fishin' Buddy 4200™ should work reliably for many years, however, there are a few things you may want to consider and check periodically:

- When cleaning the acrylic display lens, do not use ammonia or alcohol-based cleaners.
- If possible, periodically clean the surface of the transducer with soap and water to remove any oil film. Oil and dirt on the transducer will reduce the sensitivity or may completely inhibit transducer operation.
- Consider using commonly available corrosion inhibitors on the back-panel connectors in harsh environments.

CAUTION: Facing the screen toward the sun for extended periods may cause the display to reach its upper temperature limit and turn black. If this occurs and you cannot adjust it lighter, immediately cover the screen or turn it away from the sun.

CAUTION: The Fishin' Buddy 4200™ may not operate properly if the outside temperature is below 14 F (-10 C) or exposure to the sun or other heat sources causes the case to reach 140 F (60 C). Permanent damage will occur to the liquid crystal display if stored or used where the temperature is below -4 F (-20 C) or exposure to the sun or other heat sources causes the case to reach 158 F (+70 C). This type of damage is not covered by the warranty.

IF YOU ARE HAVING PROBLEMS

If you are having problems with the operation of your Fishin' Buddy 4200, please try the suggestions in this section. Should all other remedies fail, please try using the reset settings feature.

Problem: Unit won't turn on or won't stay on.

- Check the power cable installation.
- Check the battery installation.
- Make sure that all three "D" alkaline batteries are still good.
- Low batteries may not have enough voltage to run the night-light.
- Make sure that the unit is within the temperature limits.

Problem: Unit beeps but the screen stays blank or black.

- When first turned on, the contrast setting may be incorrect. Right after turning the Fishin' Buddy 4200™ on, press and release the MENU button followed by the 5 or 6 button to adjust the contrast.
- The screen may be black and just too hot to work at all. In this case, immediately cover the screen or turn it away from the sun.

Problem: Unit does not pass self-test.

- Make sure that all three "D" alkaline batteries are still good.
- Make sure that the connector is fully inserted into the back of the unit.
- If the test fails repeatedly, call our customer service number listed in the warranty.

Problem: No bottom or wrong bottom depth is found.

- Make sure the transducer is at least 8" deep in the water and in an area where no bubbles or turbulence are present.
- With your hand, rub the face of the transducer and clear off any air bubbles or debris.
- Check the clutter control.
- The bottom may be less than 1.5' deep, or the bottom may be deeper than the Buddy can display.

Problem: No fish are displayed in the graph.

- When looking for fish in shallow water, remember that the bottom transducer beam covers an area equal to the bottom depth divided by six. Example: 60' depth = approximately 10' diameter coverage.
- The gain may be too low. Try turning the gain up.

Problem: The graph is speckled with too many marks.

- Some engine ignition systems may interfere with the Fishin' Buddy 4200's operation. Aluminum boats can carry this interference throughout the hull. Confirm this by turning the engine on and off. If necessary, move the Buddy away from the engine or turn the gain down.
- Some pulse-width-modulated trolling motors may interfere with the Fishin' Buddy 4200's operation. Confirm this by changing the trolling motor's speed or by turning it on and off. Try moving the Buddy away from the trolling motor. Also, try adjusting the Gain and SCC controls.

Problem: The bottom depth number is locked onto the surface.

- Severe interference caused by wind chop and air churned into the water can sometimes fool the Buddy into giving a false bottom depth reading. Try turning on the SCC (Surface Clutter Control).

Problem: The bottom depth number is locked onto a 2nd bottom.

- A strong second bottom can sometimes fool the Buddy into giving a false depth reading. Try pulling the transducer out of the water for a few seconds, and then put it back. If the condition persists, try lowering the gain and, if needed, manually set the range.

SPECIFICATIONS

Unit dimensions	8.0" W x 6.0" H x 3.5" D
Unit dimensions with shaft	8.0" W x 36.0" H x 7.5" D
Total weight	5 lbs
Display viewing area	4.0" x 4.1"
Display pixel matrix	320 V x 320 H
Bottom depth range	Up to 240 feet
Sidefinder range	Up to 120 feet
Transducer frequency (bottom)	200 KHz
Transducer frequency (side)	455 KHz
Transducer cone angle (bottom)	18 degrees
Transducer cone angle (side)	9 degrees
Power requirement	3 alkaline "D" cell batteries
Battery life (night-light off)	Up to 30 hours

NOTE: Specifications can change without notice.

NOTE: The bottom depth range specified above is under best conditions. No guarantee of maximum depth capability is made due to the unlimited types of waters in which the Fishin' Buddy 4200™ is used.

BOTTOMLINE® 1 YEAR LIMITED WARRANTY

We warrant the original retail purchaser that products made by BottomLine® have been manufactured free from defects in materials and workmanship. This warranty is effective for one year from the date of original retail purchase. BottomLine® products found to be defective and covered by this warranty will be replaced or repaired free of charge at BottomLine® option and returned to the customer freight prepaid. BottomLine® sole responsibility under this warranty is limited to the repair or replacement of a product that has been deemed defective by BottomLine®. BottomLine® is not responsible for charges connected with the removal of such product or reinstallation of replaced or repaired parts.

This warranty does not apply to a product that has been:

- Improperly installed.
- Used in an installation other than that recommended in the product installation and operation instructions.
- Damaged or has failed because of an accident or abnormal operation.
- Repaired or modified by entities other than BottomLine®.
- Please retain your original receipt as a proof of the purchase date. This will be required for in warranty service.

THIS WARRANTY IS EXPRESSLY IN LIEU OF ANY OTHER WARRANTIES, OBLIGATIONS OR LIABILITIES ON THE PART OF BOTTOMLINE® AND WILL BE THE CUSTOMER'S EXCLUSIVE REMEDY, EXCEPT FOR ANY APPLICABLE IMPLIED WARRANTIES UNDER STATE LAW WHICH ARE HEREBY LIMITED IN DURATION TO ONE YEAR FROM THE DATE OF ORIGINAL PURCHASE. IN NO EVENT WILL BOTTOMLINE® BE LIABLE FOR ANY INCIDENTAL OR CONSEQUENTIAL DAMAGES FOR BREACH OF ANY EXPRESS OR IMPLIED WARRANTY RELATING TO THE PRODUCTS.

Some states do not allow limitations on an implied warranty, or the exclusion of incidental or consequential damages, so the above exclusions may not apply to you. You may also have other rights, which vary from state to state.

BOTTOMLINE® SERVICE POLICY

Even though you'll probably never need to take advantage of our incredible service policy, it's good to know that we back our products this confidently. We do it because you deserve the best. We will make every effort to repair your unit within three business days from the receipt of your unit at our factory. This does not include shipping time to and from our factory. Units received on Friday are typically shipped by the following Wednesday, units received Monday are typically shipped by Thursday, etc. All repair work is performed by factory-trained technicians to meet exacting factory specifications. Factory-serviced units go through the same rigorous testing and quality control inspections as new production units. After the original warranty period, a standard flat rate service charge will be assessed for each repair (physical damage and missing parts are not included). Any repairs made after the original warranty will be warranted for an additional 90 days after service has been performed by our factory technicians. You can contact our Customer Resource Center to verify the flat rate repair fee for your product:

We reserve the right to deem any product unserviceable when replacement parts are no longer available or impossible to obtain. This Service Policy is valid in the United States only. This applies only to BottomLine® products returned to our factory in Eufaula, Alabama. This Service Policy is subject to change without notice.

RETURNING YOUR UNIT FOR SERVICE

Before sending your unit in for repair, please contact the factory, either by phone or by email, to obtain a Repair Authorization Number for your unit. Please have your product model name and serial number available before calling the factory. If you contact the factory by e-mail, please include your product model name and serial number in the e-mail, and use Request for Repair Authorization Number for your e-mail subject header. You should include your Repair Authorization Number in all subsequent communications about your unit.

For IN-WARRANTY service, complete the following steps:

- Obtain a Repair Authorization Number from the BottomLine® Customer Resource Center.
- Tag product with your name, street address, phone number and your assigned Repair Authorization Number.
- Include a brief written description of the problem.
- Include a copy of your receipt (to show proof and date of purchase).
- Return product freight prepaid to BottomLine®, using an insured carrier with delivery confirmation.

For OUT-OF-WARRANTY service, complete the following steps:

- Obtain a Repair Authorization Number from the BottomLine® Customer Resource Center.
- Include payment in the form of credit card number and expiration date, money order or personal check. Please do not send cash.
- Tag product with your name, street address, phone number and your assigned Repair Authorization Number.
- Include a brief written description of the problem.
- Return product freight prepaid to BottomLine®, using an insured carrier with delivery confirmation.

Serial #

Date of Purchase

Store Where Purchased

NOTE: *Keep your Proof of Purchase and/or sales receipt for your records.*

Contact BottomLine®

Contact the BottomLine Customer Resource Center
in any of the following ways:

By Telephone:

(Monday - Friday 8:00 a.m. to 4:30 p.m. Central Standard Time):
800-456-5432

By e-mail:

(typically we respond to your e-mail within three business days):
cservice@johnsonoutdoors.com

For direct shipping, our address is:

BottomLine
Service Department
108 Maple Lane
Eufaula, AL 36027 USA