

# Fishin' Buddy™ 2202 Operations Manual



***BOTTOM LINE***  
See What You've Been Missing

# TABLE OF CONTENTS

<b>Introduction</b>	<b>3</b>
<b>Getting Started</b>	<b>4</b>
How to Install the Batteries	4
How to Attach the Mounting Bracket	5
<b>Buddy Functions and Features</b>	<b>7</b>
POWER ON AND OFF, DEMO MODE	7
Set and Adjust Features	8
<b>Fishing with the Fishin' Buddy™ 2202</b>	<b>13</b>
How Your Fishin' Buddy™ 2202 Works	13
Reading the Bottom Graph	14
Finding Fish with the SideFinder®	15
<b>Ice Fishing</b>	<b>18</b>
<b>Accessories and Replacement Parts</b>	<b>18</b>
<b>Maintenance</b>	<b>19</b>
<b>If You Are Having Problems</b>	<b>20</b>
<b>Specifications</b>	<b>23</b>
<b>BottomLine® One-Year Limited Warranty</b>	<b>24</b>
<b>BottomLine® Service Policy</b>	<b>25</b>
<b>Figures and Illustrations</b>	
<i>Fishin' Buddy™ with Battery Compartment</i>	4
<i>Mounting Bracket</i>	5
<i>Fishin' Buddy™ 2202 Display</i>	12
<i>SONAR beam (cross-section)</i>	13
<i>Fishin' Buddy™ transducer at end of shaft</i>	15
<i>SideFinder® coverage near steep and mild shorelines</i>	16

## **GOLDEN RULES FOR CONSERVATION**

---

At BottomLine®, we're committed to the protection and improvement of our fragile fishing environment, but we need your help. Here's what you can do:

- Release predator fish. Keep panfish for the table, but larger predators, such as bass, pike and walleye, are critical to a balanced fishery. Handle fish gently and release them carefully into the areas from which they were caught.
- Keep your trash. Don't discard old fishing line or other debris into the water or on the grounds around it.
- Report polluters. If the water looks or smells odd, or dying fish are visible, contact the Fish and Game immediately.
- Turn in poachers. Contact enforcement officers when you see a violation. Some Fish and Game departments offer toll free hotlines for citizens' use.
- Respect waterfront property owners. Be quiet in the early morning and careful when casting lures around moored boats and boat docks.
- Share information. Teaching others how to fish responsibly is a great gift to mankind.
- Monitor government. Write state and local legislators about your environmental concerns. Ask for their positions and track legislative actions on these issues.
- Study the facts. Don't support a cause without examining both sides. Be wary of groups manipulating information for self-serving interests.
- Encourage others. If you agree with our stand on conservation, share these points with other sportsmen and encourage them to follow our Golden Rules for Conservation.

## INTRODUCTION

---

Congratulations on your purchase of the BottomLine® Fishin' Buddy™ 2202! You now own one of the world's most portable fishfinders, with completely self-contained electronics offering BottomLine's advanced high-clarity bottom graph plus water temperature to let you make the most out of your boating and fishing experience. Using the Buddy is easy and fun. Just attach the C-clamp mounting bracket to your favorite boat, canoe, dinghy or even to a dock, and then start fishing. The Buddy is an ideal tool for ice fishing and float tubing as well.

Before installing your Fishin' Buddy™ 2202, please make sure that the following parts are included in your installation kit:

- Fishin' Buddy™ 2202 display unit with transducer.
- C-clamp mounting bracket.
- Directional handle.
- This Operations manual and warranty card.

## GETTING STARTED

---

The Fishin' Buddy™ 2202 is easy to use:

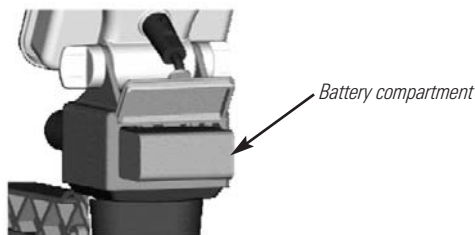
1. Install fresh batteries.
2. Attach directional handle (used to position Buddy for different viewing angles).
3. Plug transducer cable into the back of the display unit.
4. Attach the mounting bracket to a stable surface.
5. Slide the Buddy into the bracket.

Then press the power button and start fishing!

## HOW TO INSTALL THE BATTERIES

---

The Buddy requires six alkaline "AA" size batteries (not included) for operation. For easiest battery installation, lay the Buddy down on a flat surface, with the open battery compartment facing upward as shown. Place the batteries in the battery holder following what is shown in the holder itself. Then place the battery holder in the compartment and close the lid, making sure to lock it tightly.



Fishin' Buddy™ with battery compartment

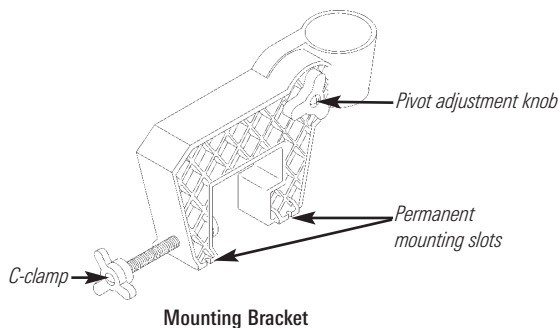
*When the batteries are fully spent (no longer can hold a charge), the screen will clear and the word **BATTERY** will be displayed for 10 seconds before the Buddy will turn itself off.*

**CAUTION:** *Always remove discharged batteries promptly and before periods of storage to prevent potential damage due to battery acid leakage. Failure to do so may void your warranty.*

## HOW TO ATTACH THE MOUNTING BRACKET

The Buddy unit should be mounted where it will be most visible and accessible. There are two ways to attach the Buddy mounting bracket: the built in C-clamp mounting bracket or the four permanent mounting slots in the base. The mounting slots accept 1/4" screws or bolts (not included). Use the following information when considering a mounting location:

- The Buddy's transducer will not work when it is not in the water.
- Turbulent water or water filled with air bubbles can cause interference or prevent the transducer from operating.



The C-clamp mounting bracket is the most versatile and portable way to mount the Buddy to your boat. Loosen the C-clamp by turning it counter-clockwise and then place the bracket around the gunnel or transom, resting it on the top surface (or as far down as possible). Then tighten the C-clamp by hand.

**CAUTION:** Do not over-tighten the C-clamp, as permanent damage may occur. If the mounting bracket is not stable after tightening by hand, try repositioning the bracket.

### ***Start fishing!***

The Fishin' Buddy is designed to run automatically with just a press of the power button. To get the most out of your Buddy, read the next section on functions and features.

## BUDDY FUNCTIONS AND FEATURES

---

The best way to get familiar with your Buddy is to power-up in demo mode and start pressing buttons. You will not hurt anything by doing so, but you may lose or change some settings accidentally. **Don't worry.** Your Buddy has a reset feature that restores everything back to factory settings.

### POWER ON AND OFF, DEMO MODE

---

**POWER ON** - Press and release the POWER button.

**DEMO MODE** - While powering on the Fishin' Buddy 2202, keep the **POWER** button pressed until the words SIMULATOR and REAL appear on the screen. Use the **UP** and **DOWN** buttons to move the fish symbol in front of your selection, then press the **MENU** button to continue.

**POWER OFF** - Press and hold the **POWER** button until the display is blank.

***NOTE:** The Fishin' Buddy™ 2202 remembers your previous settings every time you power it on again (this does not happen in demo mode).*

## SET AND ADJUST FEATURES

---

After power-up, features can be adjusted using the following procedure:

1. Press the **POWER-MENU** button to display feature adjustments.
2. Press the **UP or DOWN** button to find the feature you want to adjust.
3. Press the **POWER-MENU** button to select the feature you want to adjust.
4. Press the **UP or DOWN** button to adjust the feature (see specific instructions below for Range and Depth Alarm).
5. Press the **POWER-MENU** button to restore the normal display.

**TIP:** When no menu is displayed, press and hold the **UP or DOWN** button to freeze the graph.

**CONTRAST** - Contrast is the darkness or lightness of the display. Both your viewing angle and the ambient temperature affect the contrast.

**CAUTION:** Facing the screen toward the sun for extended periods may cause the display to reach its upper temperature limit and become black. If this occurs and you cannot adjust it lighter, immediately cover the screen or turn it away from the sun.

**LIGHT** - The Fishin' Buddy™ 2202 has a display backlight for use when there is not enough daylight to view the screen. The backlight also generates heat and can be used to help warm the display in cold weather.

**GAIN** - The gain control sets the graph's overall sensitivity to echoes. Generally, a higher gain number means that more fish and structure are shown. Lowering the gain may help reduce interference caused by trolling motors and other sources of noise.

**TIP:** Use as much gain or as little gain as you want, but remember that the bottom depth readout may not work under all settings.

**SCC** - The Surface Clutter Control reduces undesirable signals on the graph. Such signals may include surface clutter (created by turbulence around the transducer), thermocline, air bubbles, algae bloom, etc. Turn on SCC if these signals inhibit the display of the bottom.

***NOTE:** Turning on the surface clutter control may inhibit shallow-water bottom readings.*

**ICE** - The ice fishing mode control overrides the screen clutter control and increases the gain significantly to help display smaller objects. Although this improves the picture in most ice fishing situations, it may increase clutter and is normally turned off for other types of fishing.

**RANGE** - The bottom range control allows you to set how deep the bottom graph will display. The bottom range is displayed in the upper-right corner of the graph.

In automatic mode, the Fishin' Buddy™ 2202 sets the graph range to graph from the water surface down to just below the bottom.

**A** - *This symbol in the upper-right corner of the display indicates automatic range mode.*

You may want to set the range manually if the bottom reading becomes unreliable or if you are only interested in seeing the top portion of the water. In this case, the **A** symbol will disappear indicating that you set the range yourself.

In bottom-tracking mode, the Fishin' Buddy™ 2202 sets the range to graph the 10 ft (3 m) of water just above the bottom. This zoomed-in graph is useful for determining bottom features and for marking fish lying close to the bottom.

**B** - *This symbol in the upper-right corner of the display indicates bottom-tracking mode.*

- Operation: *Press and release* the **UP** or **DOWN** button to select automatic or bottom-tracking mode, or *press and hold* **UP** or **DOWN** to set a manual range.

**DEPTH** - The depth alarm sounds when the depth (from the transducer to the estimated bottom) is less than the setting.

- Operation: *Press and hold* the **UP** or **DOWN** to activate the alarm and set the depth. *Press and release* the **UP** or **DOWN** button to turn the alarm on and off.

**FISH ALARM** - The fish alarm chimes and displays fish symbols to represent echoes that are likely to be from fish. The depth of the fish is also shown if there is room on the display. The symbol size indicates the relative signal strength of the echo, with the largest representing the strongest echo.

**NOTE:** *A timer function prevents the alarm from chiming too often.*

**UNITS** - The Fishin' Buddy™ 2202 can display in either imperial (U.S.) or metric units for depth and temperature.

**RESET** - This feature resets most menu settings back to the factory defaults. Try using Reset when the Fishin' Buddy™ 2202 does not appear to be working properly and you are not sure if the problem is in the settings. When the Reset menu is on the screen, press the **UP** or **DOWN** button to reset the settings.

**SCREEN** - This feature will allow the Sidefinder to be on or off.

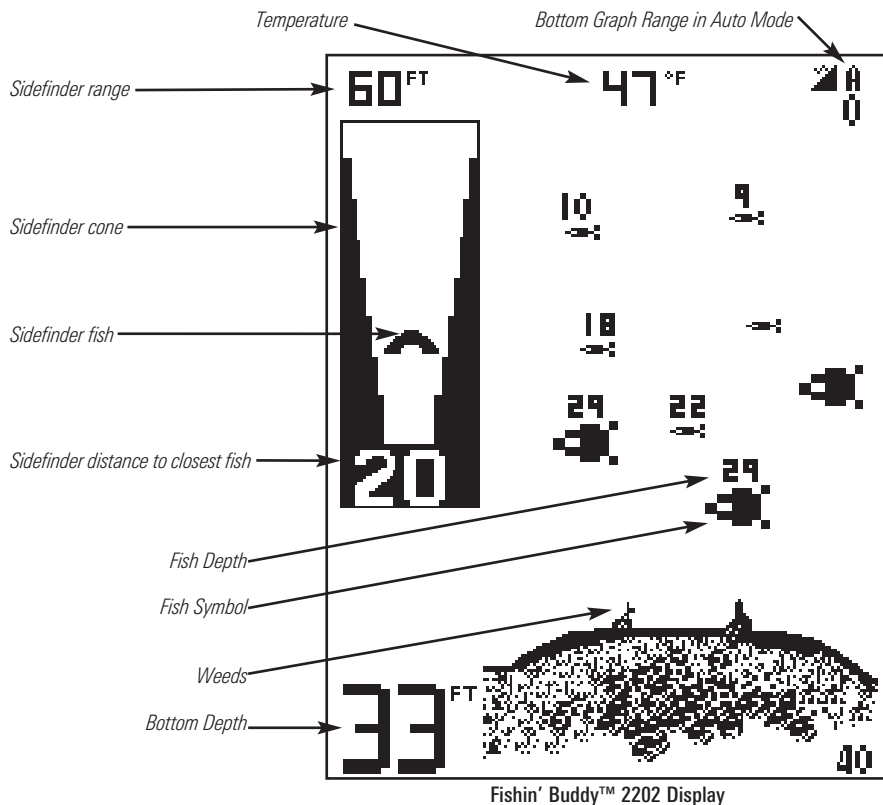
**SIDE RANGE** - The Sidefinder Range control allows you to set how far to the side the Fishin' Buddy™ 2202 will display fish. If you are casting, you'll probably want to choose a close range to get the maximum detail in the cone. The Sidefinder Range is displayed in the upper-left corner of the display.

**SIDE FILTER** - The Sidefinder Filter is used to reduce false markings from submerged objects like pier poles and submerged branches. The filter is best used around docks and other shoreline structures where false markings might occur. In most situations, and especially in open water, the best performance is obtained with the filter turned off.



- This symbol on the display indicates that the Sidefinder Filter is on.

**NOTE:** *The Sidefinder will show fewer fish with the filter on.*

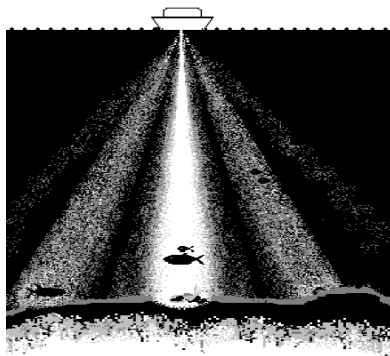


## FISHING WITH THE FISHIN' BUDDY™ 2202

### HOW YOUR FISHIN' BUDDY™ 2202 WORKS

The Fishin' Buddy™ 2202 uses active SONAR, short for Sound Navigation and Ranging, to locate and identify objects in the water. The transducer sends out short bursts of ultrasonic sound waves into the water and then listens for echoes to come back from objects and the bottom. The further away the object or bottom is, the longer it takes the echo to return.

These ultrasonic waves "illuminate" the water, forming a beam that is strongest in the direction that the transducer is pointed. Weaker side-lobes split off from the main beam and with enough gain can be used for finding fish as well. You can calculate the approximate diameter of the main beam on the bottom as the depth divided by six.



SONAR beam (cross-section)

## READING THE BOTTOM GRAPH

---

The bottom graph is created by drawing all of the echoes from a single burst in a vertical column on the display, with the echoes from deepest objects drawn lowest on the display. After all the echoes from the burst are drawn, the graph is shifted to the left and the process is repeated.

### **Grayscale**

The Fishin' Buddy™ 2202 uses a gray-checkered pattern to display the strongest signals, which are usually from a hard bottom. Weaker signals above the bottom are displayed as black. This allows you to separate the bottom from weeds and to differentiate a hard bottom from a soft, muddy one. A soft bottom typically gives a thinner bottom image that is mostly black. A hard bottom is displayed as a thin, black line over a much thicker area of checkered gray. Light weed cover above the bottom will give a thicker, sketchy black area above the checkered gray.

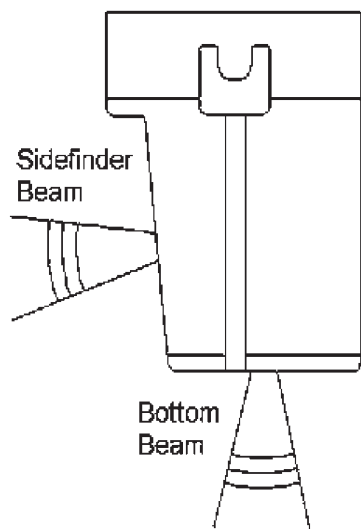
### **Fish**

To view the natural echoes from fish and other objects in the water, turn the fish alarm symbols off. Many fishermen have heard that an arch is a good way of locating fish, but other objects you troll across may also produce arches.

A better way of determining fish is to watch for subtle patterns on the graph. Solid horizontal lines across the screen are often fish hovering under the transducer. These lines may go up and down, suggesting some movement if they are fish. Generally, thicker marks come from larger fish. Clouds of pixels are often schooling baitfish. Groups of diagonal lines are usually bubbles rising steadily up from the bottom. As you get more familiar with the Fishin' Buddy™ 2202 and the water that you fish in, you will pick out many other patterns as well.

## FINDING FISH WITH THE SIDEFINDER®

The Fishin' Buddy™ 2202 uses BottomLine's patented Sidefinder® technology to scan where you cast and, with good accuracy, determine which echoes are from fish and which are from other objects. Fish that are startled by your boat and move away would not be seen with a conventional depthfinder. Sidefinder® technology can provide up to a 60 times improvement in fish finding coverage in shallow water.

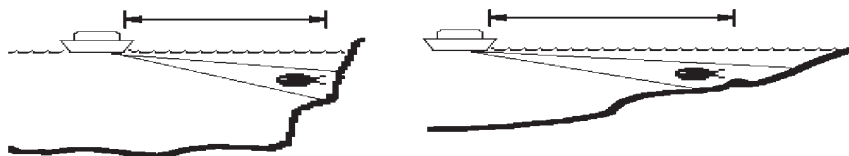


Fishin' Buddy™ Transducer at end of shaft

The Sidefinder® SONAR beam comes out from the flat side of the transducer housing at the bottom of the shaft. When searching for fish, make sure the flat side points toward the area of your search.

## **Sidefinder - Viewing the Shoreline**

Each shoreline has its own unique characteristics. The Fishin' Buddy™ 2202 can see all the way up to the shore when the drop-off is sharp or if there are ledges. When the slope of the bottom is gentle, the Buddy will not see all the way to the shoreline. The Buddy can normally detect spawning fish that build beds near the shoreline. Direct experience with each shoreline will teach you the Buddy's capabilities.



Sidefinder® coverage near steep and mild shorelines

## **Sidefinder® - Weeds and Other Obstructions**


The best way to understand how your Buddy "sees" is to imagine that the transducer is a flashlight and the water is clear. If you are trying to "see" into weeds, the ability of your flashlight beam to penetrate depends on the thickness of the weeds. If the weeds are thin, your flashlight beam will penetrate further. If you are trying to see past an underwater rise to view the shoreline, it is a question of how high the rise is. You can "see" the shore if you can shine your flashlight beam above the rise and illuminate the shore in the background.

### **Sidefinder® - False Markings**

Occasionally, the Buddy may falsely mark objects other than fish. This can occur with air bubble streams from nearby boats or air filled swim ladders. This can also occur when the Buddy is aimed at a cement or rock wall due to a double reflection effect. The Fishin' Buddy™ 2202 is designed to eliminate false readings, especially with the filter on. Due to the strength of the signal, it is possible to fool and thus, get an occasional false reading if the unit is working from a stationary, non-moving boat or a pier. The Sidefinder® filter allows the Buddy to be much more selective in marking fish. Use the filter around docks and other structures in the water. The Buddy will display fewer fish with the filter on.

### **Sidefinder® - Interpreting the Display**

**CONE** - The transducer cone graph on the screen represents the area and the direction in which the Fishin' Buddy™ 2202 is searching for fish.

**FISH** - The  symbols displayed in the graph shows where the Buddy has marked fish. Even though a fish may quickly move out of the transducer beam, all fish symbols are displayed for at least five seconds. The symbol does not indicate the size of the fish.

**DISTANCE TO CLOSEST FISH** - The big digits at the bottom of the cone indicates the distance to the closest fish. If no fish are found, no digits are displayed. As with the fish symbol, when a fish is marked, the big digits remain on the display for at least five seconds.

## ICE FISHING

---

The Buddy is ideal for ice fishing. Simply install the bracket on a long flat piece of wood, then mount the Buddy on one end of the wood piece and place your tackle box (or some other weight) on the opposite end to ensure stability. Be careful not to get water between the mounting clamp and the main unit because these two pieces could freeze together.

You may also purchase the Buddy Ice Fishing Bracket #01-9063 where you purchased your Fishin' Buddy™ 2202. If the dealer does not carry this item, contact **[www.bottomlinefishfinders.com](http://www.bottomlinefishfinders.com)**.

***NOTE:** In cold weather, the Buddy's lights may be used to help warm the LCD display, at the expense of shorter battery life.*

## ACCESSORIES AND REPLACEMENT PARTS

---

BottomLine® offers a full line of accessories and replacement parts. These items should be available where you purchased your Fishin' Buddy™ 2202. If the dealer does not carry an item you want, you may be able to order it at **[www.bottomlinefishfinders.com](http://www.bottomlinefishfinders.com)**.

## MAINTENANCE

---

Your Fishin' Buddy™ 2202 should work reliably for many years, however, there are a few things you may want to consider and check periodically:

- When cleaning the acrylic display lens, do not use ammonia or alcohol-based cleaners.
- If possible, periodically clean the surface of the transducer with soap and water to remove any oil film. Oil and dirt on the transducer will reduce the sensitivity or may completely inhibit transducer operation.
- Consider using commonly available corrosion inhibitors on the back-panel connectors in harsh environments.

**CAUTION:** Facing the screen toward the sun for extended periods may cause the display to reach its upper temperature limit and turn black. If this occurs and you cannot adjust it lighter, immediately cover the screen or turn it away from the sun.

**CAUTION:** The Fishin' Buddy 2202™ may not operate properly if the outside temperature is below 14 F (-10 C) or exposure to the sun or other heat sources causes the case to reach 140 F (60 C). Permanent damage will occur to the liquid crystal display if stored or used where the temperature is below -4 F (-20 C) or exposure to the sun or other heat sources causes the case to reach 158 F (+70 C). This type of damage is not covered by the warranty.

## IF YOU ARE HAVING PROBLEMS

---

If you are having problems with the operation of your Fishin' Buddy™ 2202, please try the suggestions in this section. Should all other remedies fail, please try using the reset settings feature.

### **Problem: Unit won't turn on or won't stay on.**

- Check the power cable installation.
- Check the battery installation.
- Make sure that all six "AA" alkaline batteries are still good.
- Low batteries may not have enough voltage to run the night-light.
- Make sure that the unit is within the temperature limits.

### **Problem: Unit beeps but the screen stays blank or black.**

- When first turned on, the contrast setting may be incorrect. Right after turning the Fishin' Buddy™ 2202 on, press and release the POWER-MENU button twice followed by the UP or DOWN button to adjust the contrast.
- The screen may be black and just too hot to work at all. In this case, immediately cover the screen or turn it away from the sun.

### **Problem: Unit does not pass self-test.**

- Make sure that all six "AA" alkaline batteries are still good.
- Make sure that the connector is fully inserted into the back of the unit.
- If the test fails repeatedly, call our customer service number listed in the warranty.

**Problem: No bottom or wrong bottom depth is found.**

- Make sure the transducer is at least 8" deep in the water and in an area where no bubbles or turbulence are present.
- With your hand, rub the face of the transducer and clear off any air bubbles or debris.
- Check the clutter control.
- The bottom may be less than 1.5' deep, or the bottom may be deeper than the Buddy can display.

**Problem: No fish are displayed in the graph.**

- When looking for fish in shallow water, remember that the bottom transducer beam covers an area equal to the bottom depth divided by six. Example: 60' depth = approximately 10' diameter coverage.
- The gain may be too low. Try turning the gain up.

**Problem: The graph is speckled with too many marks.**

- Some engine ignition systems may interfere with the Fishin' Buddy™ 2202's operation. Aluminum boats can carry this interference throughout the hull. Confirm this by turning the engine on and off. If necessary, move the Buddy away from the engine or turn the gain down.
- Some pulse-width-modulated trolling motors may interfere with the Fishin' Buddy™ 2202's operation. Confirm this by changing the trolling motor's speed or by turning it on and off. Try moving the Buddy away from the trolling motor. Also, try adjusting the Gain and SCC (Surface Clutter Control) controls.

**Problem: The bottom depth number is locked onto the surface.**

- Severe interference caused by wind chop and air churned into the water can sometimes fool the Buddy into giving a false bottom depth reading. Try turning on the SCC (Surface Clutter Control).

**Problem: The bottom depth number is locked onto a 2nd bottom.**

- A strong second bottom can sometimes fool the Buddy into giving a false depth reading. Try pulling the transducer out of the water for a few seconds, and then put it back. If the condition persists, try lowering the gain and, if needed, manually set the range.

## SPECIFICATIONS

---

Unit dimensions .....	5.0"Wx5.3"Hx2.5"D
Unit dimensions with shaft .....	5.0"Wx31.7"Hx3.5"D
Total weight .....	3 lbs
Display viewing area .....	3.1" x 2.3"
Display pixel matrix .....	160V x 104H
Bottom depth range .....	Up to 240 feet
Sidescan range .....	Up to 120 feet
Transducer frequency (bottom) .....	455 kHz
Transducer frequency (side) .....	455 KHz
Transducer cone angle (bottom) .....	9 degrees
Transducer cone angle (side) .....	9 degrees
Power requirement .....	6 alkaline "AA" cell batteries
Battery life (night-light off) .....	Up to 30 hours

**NOTE:** Specifications can change without notice.

**NOTE:** The bottom depth range specified above is under best conditions. No guarantee of maximum depth capability is made due to the unlimited types of waters in which the Fishin' Buddy™ 2202 is used.

## **BOTTOMLINE® ONE-YEAR LIMITED WARRANTY**

---

We warrant the original retail purchaser that products made by BottomLine® have been manufactured free from defects in materials and workmanship. This warranty is effective for one year from the date of original retail purchase. BottomLine® products found to be defective and covered by this warranty will be replaced or repaired free of charge at BottomLine® option and returned to the customer freight prepaid. BottomLine® sole responsibility under this warranty is limited to the repair or replacement of a product that has been deemed defective by BottomLine®. BottomLine® is not responsible for charges connected with the removal of such product or reinstallation of replaced or repaired parts.

This warranty does not apply to a product that has been:

- Improperly installed.
- Used in an installation other than that recommended in the product installation and operation instructions.
- Damaged or has failed because of an accident or abnormal operation.
- Repaired or modified by entities other than BottomLine®.
- Please retain your original receipt as a proof of the purchase date. This will be required for in warranty service.

THIS WARRANTY IS EXPRESSLY IN LIEU OF ANY OTHER WARRANTIES, OBLIGATIONS OR LIABILITIES ON THE PART OF BOTTOMLINE® AND WILL BE THE CUSTOMER'S EXCLUSIVE REMEDY, EXCEPT FOR ANY APPLICABLE IMPLIED WARRANTIES UNDER STATE LAW WHICH ARE HEREBY LIMITED IN DURATION TO ONE YEAR FROM THE DATE OF ORIGINAL PURCHASE. IN NO EVENT WILL BOTTOMLINE® BE LIABLE FOR ANY INCIDENTAL OR CONSEQUENTIAL DAMAGES FOR BREACH OF ANY EXPRESS OR IMPLIED WARRANTY RELATING TO THE PRODUCTS.

Some states do not allow limitations on an implied warranty, or the exclusion of incidental or consequential damages, so the above exclusions may not apply to you. You may also have other rights, which vary from state to state.

## **BOTTOMLINE® SERVICE POLICY**

Even though you'll probably never need to take advantage of our incredible service policy, it's good to know that we back our products this confidently. We do it because you deserve the best. We will make every effort to repair your unit within three business days from the receipt of your unit at our factory. This does not include shipping time to and from our factory. Units received on Friday are typically shipped by the following Wednesday, units received Monday are typically shipped by Thursday, etc. All repair work is performed by factory-trained technicians to meet exacting factory specifications. Factory-serviced units go through the same rigorous testing and quality control inspections as new production units. After the original warranty period, a standard flat rate service charge will be assessed for each repair (physical damage and missing parts are not included). Any repairs made after the original warranty will be warranted for an additional 90 days after service has been performed by our factory technicians. You can contact our Customer Resource Center to verify the flat rate repair fee for your product:

We reserve the right to deem any product unserviceable when replacement parts are no longer available or impossible to obtain. This Service Policy is valid in the United States only. This applies only to BottomLine® products returned to our factory in Eufaula, Alabama. This Service Policy is subject to change without notice.

## RETURNING YOUR UNIT FOR SERVICE

---

Before sending your unit in for repair, please contact the factory, either by phone or by email, to obtain a Repair Authorization Number for your unit. Please have your product model name and serial number available before calling the factory. If you contact the factory by e-mail, please include your product model name and serial number in the e-mail, and use Request for Repair Authorization Number for your e-mail subject header. You should include your Repair Authorization Number in all subsequent communications about your unit.

### **For IN-WARRANTY service, complete the following steps:**

- Obtain a Repair Authorization Number from the BottomLine® Customer Resource Center.
- Tag product with your name, street address, phone number and your assigned Repair Authorization Number.
- Include a brief written description of the problem.
- Include a copy of your receipt (to show proof and date of purchase).
- Return product freight prepaid to BottomLine®, using an insured carrier with delivery confirmation.

### **For OUT-OF-WARRANTY service, complete the following steps:**

- Obtain a Repair Authorization Number from the BottomLine® Customer Resource Center.
- Include payment in the form of credit card number and expiration date, money order or personal check. Please do not send cash.
- Tag product with your name, street address, phone number and your assigned Repair Authorization Number.
- Include a brief written description of the problem.
- Return product freight prepaid to BottomLine®, using an insured carrier with delivery confirmation.

Serial #

Date of Purchase

Store Where Purchased

**NOTE:** *Keep your Proof of Purchase and/or sales receipt for your records.*

### Contact BottomLine®

Contact the BottomLine Customer Resource Center  
in any of the following ways:

**By Telephone:**

(Monday - Friday 8:00 a.m. to 4:30 p.m. Central Standard Time):  
800-456-5432

**By e-mail:**

(typically we respond to your e-mail within three business days):  
**[cservice@johnsonoutdoors.com](mailto:cservice@johnsonoutdoors.com)**

For direct shipping, our address is:

**BottomLine**  
Service Department  
108 Maple Lane  
Eufaula, AL 36027 USA