



Magellan® RoadMate™

Reference Manual



Instructions for Operating the Magellan RoadMate 2200T

IMPORTANT SAFETY WARNINGS

The Magellan RoadMate 2200T is a vehicle-navigation aid designed to assist you in arriving to your selected destinations. When using the Magellan RoadMate 2200T, these safety rules must be followed to prevent accidents that can result in injury or death to yourself or others:

- California and Minnesota law prohibits mounting any item to your windshield. Please check with your state or local law enforcement for applicable regulations regarding windshield mounting. Go to www.magellanGPS.com for alternate mounting solutions. An adhesive disk is supplied with the Magellan RoadMate for use as an alternate mounting solution to the dashboard.
- When driving, the need to view the display is minimal. Voice prompts will guide you to your destination. The driver should enter data or program the Magellan RoadMate 2200T only when the vehicle is stopped. Only a vehicle passenger should enter data or program the Magellan RoadMate 2200T while the vehicle is moving.
- It is your responsibility to comply with all traffic laws.
- Every attempt is made to ensure that the database is accurate. However, roadways, points of interest (POIs), and business and service locations may change over time. The database does not include, analyze, process, consider, or reflect any of the following: legal restrictions (such as vehicular type, weight, height, width, load and speed restrictions); road slope or grade; bridge height, width, weight, or other limits; population density; neighborhood quality or safety; availability or proximity of law enforcement, emergency rescue, medical, or other assistance; construction work zones or hazards; road or lane closures; road, traffic, or traffic facilities' safety or condition; weather conditions; pavement characteristics or conditions; special events; traffic congestion. It is your responsibility to disregard any unsafe, hazardous, or illegal route suggestions.
- Keep the Magellan RoadMate 2200T safe from extreme temperature conditions. For example, do not leave it exposed to direct sunlight for an extended period of time.
- Take care when mounting the Magellan RoadMate 2200T in your vehicle, whether using the windshield mount or other mount or accessories, that it does not obstruct the driver's view of the road, interfere with the operation of the vehicle's safety devices such as air bags, or present a hazard to occupants of the vehicle should the Magellan RoadMate 2200T be dislodged while driving. You assume the risks associated with damage to your vehicle or vehicle occupants as the result of your choices in mounting the Magellan RoadMate 2200T.
- Laws in some states prohibit wearing stereo headphones while operating a motor vehicle. Please contact your state's Department of Motor Vehicles for information.
- The battery in the Magellan RoadMate 2200T is rechargeable and should not be removed. In the event it should need to be replaced, please contact Magellan Technical Support.

About Charging the Magellan RoadMate 2200T

- Use only the AC adapter approved for your Magellan RoadMate 2200T. Use of another type of AC adapter can result in malfunction and/or possible fire hazard due to battery over heating.
- Use only the car charger approved for / supplied with your Magellan RoadMate 2200T. Use of another type of car charger will result in malfunction and/or damage to the receiver.
- The Magellan RoadMate 2200T is intended to be supplied with a LISTED Power Unit marked with "LPS", "Limited Power Source" and output rated + 5 V dc / 2.0 A".
- Use the USB cable approved for / supplied with your Magellan RoadMate 2200T.
- For safety reasons, the battery in your Magellan RoadMate 2200T will stop charging when the ambient temperature is less than 32°F (0°C) or more than 113°F (45°C)

IMPORTANT SAFETY WARNINGS

About the AC Adapter

- Do not use the adapter in a high moisture environment. Never touch the adapter when your hands or feet are wet.
- Allow adequate ventilation around the adapter when using it to operate the device or charging the battery. Do not cover the AC adapter with paper or other objects that will reduce cooling. Do not use the AC adapter while it is inside a carrying case.
- Connect the adapter to a proper power source. The voltage and grounding requirements are found on the product case and/or packaging.
- Do not use the adapter if the cord becomes damaged.
- Do not attempt to service the Magellan RoadMate 2200T. There are no serviceable parts inside. Replace the Magellan RoadMate 2200T if it is damaged or exposed to excess moisture.

About the Battery

- Do not attempt to replace the battery. Please contact Magellan Technical Support for issues related to the battery.
- Use the charger approved for your Magellan RoadMate 2200T.

IMPORTANT SAFETY WARNINGS

Federal Communication Commission Interference Statement

This equipment has been tested and found to comply with the limits for a Class B digital device, pursuant to Part 15 of the FCC Rules. These limits are designed to provide reasonable protection against harmful interference in a residential installation. This equipment generates, uses and can radiate radio frequency energy and, if not installed and used in accordance with the instructions, may cause harmful interference to radio communications. However, there is no guarantee that interference will not occur in a particular installation. If this equipment does cause harmful interference to radio or television reception, which can be determined by turning the equipment off and on, the user is encouraged to try to correct the interference by one of the following measures:

- -Reorient or relocate the receiving antenna.
- -Increase the separation between the equipment and receiver.
- -Connect the equipment into an outlet on a circuit different from that to which the receiver is connected.
- -Consult the dealer or an experienced radio/TV technician for help.

This device complies with Part 15 of the FCC Rules. Operation is subject to the following two conditions: (1) This device may not cause harmful interference, and (2) this device must accept any interference received, including interference that may cause undesired operation.

FCC Caution: Any changes or modifications not expressly approved by the party responsible for compliance could void the user's authority to operate this equipment.

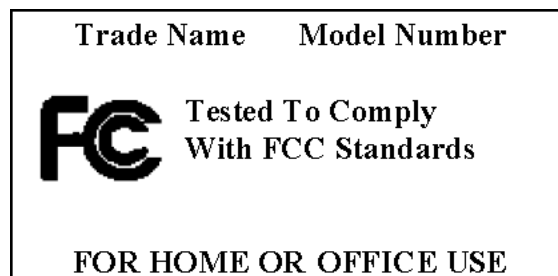
IMPORTANT NOTE:

FCC Radiation Exposure Statement:

This equipment complies with FCC radiation exposure limits set forth for an uncontrolled environment. End users must follow the specific operating instructions for satisfying RF exposure compliance.

This transmitter must not be co-located or operating in conjunction with any other antenna or transmitter.

In order to maintain compliance with FCC regulations, shielded cables must be used with this equipment. Operation with non-approved equipment or unshielded cables is likely to result in interference to radio and TV reception. The user is cautioned that changes and modifications made to the equipment without the approval of manufacturer could void the user's authority to operate this equipment.



The Magellan RoadMate 2200T must be installed and operated at a distance no closer than 8 inches (20 cm) from the user.

This Class B digital apparatus meets all requirements of the Canadian Interference-Causing Equipment Regulations.

Cet appareil numérique de la classe B respecte toutes les exigences du Règlement sur le matériel brouilleur du Canada.

IMPORTANT SAFETY WARNINGS

IC statement

Operation is subject to the following two conditions:

1. This device may not cause interference and
2. This device must accept any interference, including interference that may cause undesired operation of the device.

IMPORTANT NOTE:

IC Radiation Exposure Statement:

This equipment complies with IC radiation exposure limits set forth for an uncontrolled environment. End users must follow the specific operating instructions for satisfying RF exposure compliance.

This transmitter must not be co-located or operating in conjunction with any other antenna or transmitter.

© 2006 Magellan Navigation, Inc. All rights reserved. The Magellan Logo, Magellan, Magellan RoadMate 2200T, Turn it on and go, TrueView, QuickSpell, SmartDetour, and SmartVolume are trademarks of Magellan Navigation, Inc. No part of this user manual may be reproduced or transmitted in any form or by any means, electronic or mechanical, including photocopying and recording, for any purpose other than the purchaser's personal use, without the prior written permission of Magellan Navigation, Inc.

631401-01 A

Magellan RoadMate 2200T 1

What the Magellan RoadMate can do for you... 1

Magellan RoadMate Reference Manual 1

Magellan RoadMate 2200T 2

Magellan RoadMate 2200T Right Side View 3

Magellan RoadMate 2200T Left Side View 3

Magellan RoadMate 2200T Screens 4

Map Screen 4

Main Menu Screens 5

Main Menu - Active Route 5

Main Menu - No Active Route 7

Locate Screen (Tap the top bar on the Map screen) 8

Maneuver List Screen (Tap the next maneuver bar on the Map screen) 8

Application Menu Screen 9

Creating Routes 10

Overview 10

Creating a route to a street address 10

Creating a route using POIs 11

Creating a route to a POI by name 11

Creating a route to a nearest POI 12

Creating a route to a POI from an upcoming freeway exit 12

Creating a route to go home 13

Setting the home address 13

Changing the home address 13

Create a route to the home address 14

Using the address book 14

Creating a route to a previous destination 14

Adding a previous destination to your address book 14

Creating a route to a favorite destination 15

Creating a route to an address in the address book 15

Editing an address in the address book 15

Deleting an address from the address book 16

Creating a new address 16

Creating a route to an intersection 17

Using the Trip Planner 19

Overview 19

Creating a multiple destination trip 19

Activating a multiple destination trip 19

Editing a multiple destination trip 20

Deleting a multiple destination trip 21

Renaming a multiple destination trip 21

Magellan RoadMate Enhanced POIs 22

Overview 22

Accessing the Enhanced POI Menu 22

Loading an Enhanced POI file 22

Displaying/Selecting Categories 22

Setting Alarms 22

Setting Alert Parameters 22

Creating a Route Using Enhanced POIs 23

Saving a POI to your Address Book from Enhanced POIs 23

Setting User Options 24

Overview 24

POI Selection 24

Address Book Options 24

Map Options 24

Map Colors 25

Route Preferences 25

Detour Options 25

Simulator Mode 26

Menu Colors 26

Tone Options 26

Navigation Instruction 26

GPS Options 26

Backup and Restore 27

System Settings 28

Overview 28

Volume 28

Brightness 28

Power 28

Language 28

Time Zone 28

Unit of Measure 29

Product Information 29

Diagnosis 29

Additional Items 29

Battery Life 29

Contact Us 29

Magellan RoadMate Tools Installation 30

Installing the Software 30

Magellan RoadMate POI Manager 31

Latitude 31

- Longitude 31**
- Altitude 32**
- Opening a POI File 32**
- Creating a New POI File 33**
- Adding Individual POI's 33**
- Importing a Data File 35**

Magellan RoadMate Music Manager 36

Magellan RoadMate Photo Manager 37

Music Player 38

- Single Song Play 38**
- Multiple Song Play 39**
 - Play 39
 - Create 39
 - Modify 39
 - Delete 39
 - Rename 40
- Play Mode 40**
- List Songs 40**
- Equalizer 40**
- Help 40**

Photo Viewer 41

- View Single Photo 41**
 - Previous Image (left arrow) 41
 - Zoom 41
 - Slideshow 42
 - Pan 42
 - Rotate Image 42
- Next Image (right arrow) 42**
 - ESC 42
- Manage Photos 42**
 - List View 42
 - Thumbnail 42
 - Rename 42
 - Properties 42
- Tools 43**
 - Preferences 43
 - Delete Files 43
 - About 43

Magellan RoadMate 2200T

NOTICE: If this is the first time you are using the Magellan RoadMate you must follow the instructions provided in the Getting Started document to set the reset switch in the up position.

Thank you for your purchase of the Magellan RoadMate 2200T. The Magellan RoadMate 2200T will be your perfect driving companion for all your trips, from a trip to the grocery store or a week's vacation.

What the Magellan RoadMate can do for you...

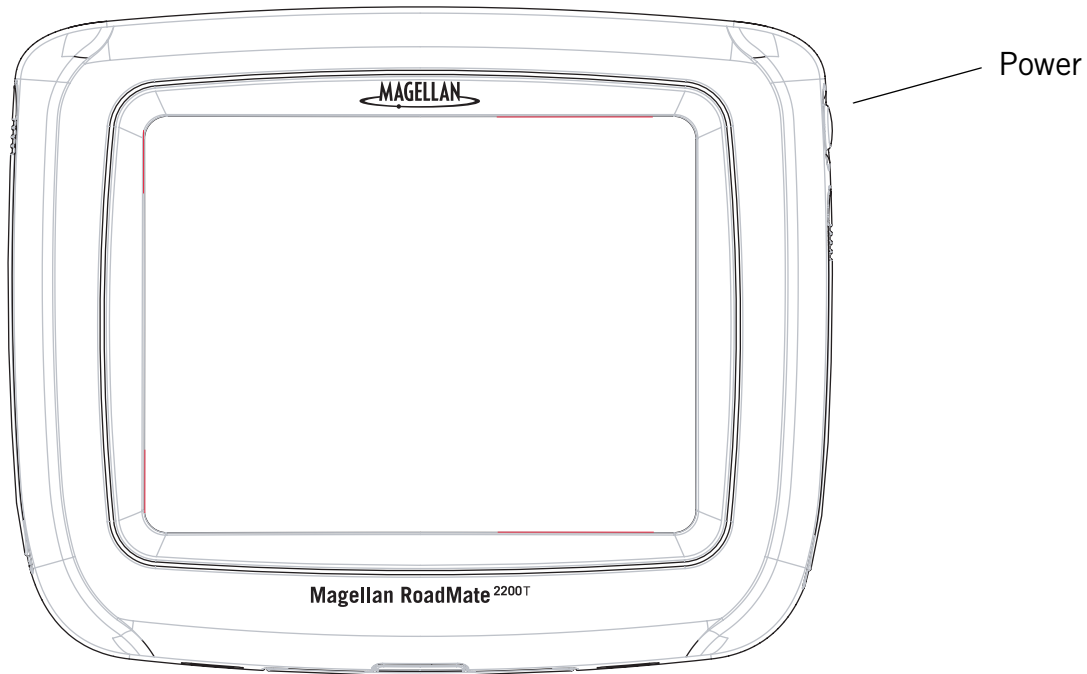
- Provide turn-by-turn driving instructions to any address you enter.
- Contains an address book that you can save addresses that you commonly need to go to. You can even mark an address as a favorite to make it easier to find.
- Comes preloaded with a large, easily accessible points of interest (POI) database that can be used to quickly find a restaurant, gas station, bank or other popular destinations.
- The Magellan RoadMate includes a SmartDetour™ tool that will automatically ask you if you want to detour around those stubborn traffic jams.
- Includes a trip planner that provides you with the ability to create a trip with multiple destinations.
- A trip computer that provides a record of your trip that can be saved.
- You can even route to an intersection when you are unsure of the exact address but you are familiar with the cross streets.
- Small and portable, the Magellan RoadMate fits in your pocket and is ready to go with you anywhere.

The interface of the Magellan RoadMate is smart and easy-to-use. Every function is just a tap away using the touchscreen of the Magellan RoadMate.

Magellan RoadMate Reference Manual

It is not necessary to read this entire document to begin using the Magellan RoadMate. Most users will find that they can use the Magellan RoadMate right out of the box and just refer to this manual on those rare occasions when a little help on a function is needed.

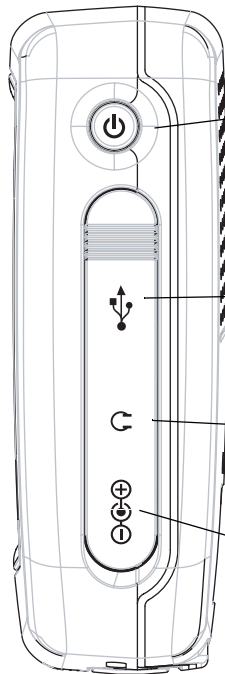
Magellan RoadMate 2200T



The Magellan RoadMate 2200T uses a touchscreen display for all user inputs. The only readily accessible button that is normally used is the power button located on the right side of the unit. To prevent accidental turn on, you need to press and hold the power button for a few seconds to turn the Magellan RoadMate on. [Note: The reset switch must be on (in the up position) before the Magellan RoadMate can be turned on.]

All connections to the Magellan RoadMate are located on the left and right sides of the unit, protected by a rubber covering to keep out moisture. When you need to access the connectors, simply lift the protective cover from the bottom.

Magellan RoadMate 2200T Right Side View



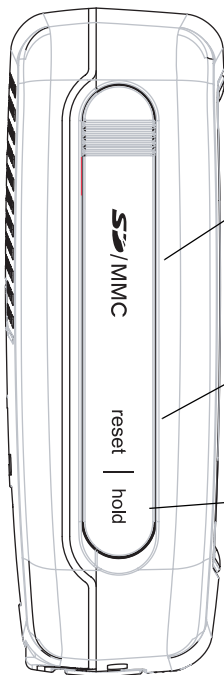
Power - Press and hold to turn the Magellan RoadMate on or off. (Note: The reset switch MUST be in the up position.)

USB Connection - (under protective cover) Used for connecting to a personal computer to upgrade the firmware.

Headphone Connector - (under protective cover) Please check local laws for use of headphones while driving.

External Power Input - (under protective cover) Connects power to the Magellan RoadMate from a cigarette lighter adapter or an approved AC adapter.

Magellan RoadMate 2200T Left Side View



SD Card Slot - (under protective cover) Used to accept an optional SD card. The SD card can be used to store music and photos as well as optional region maps.

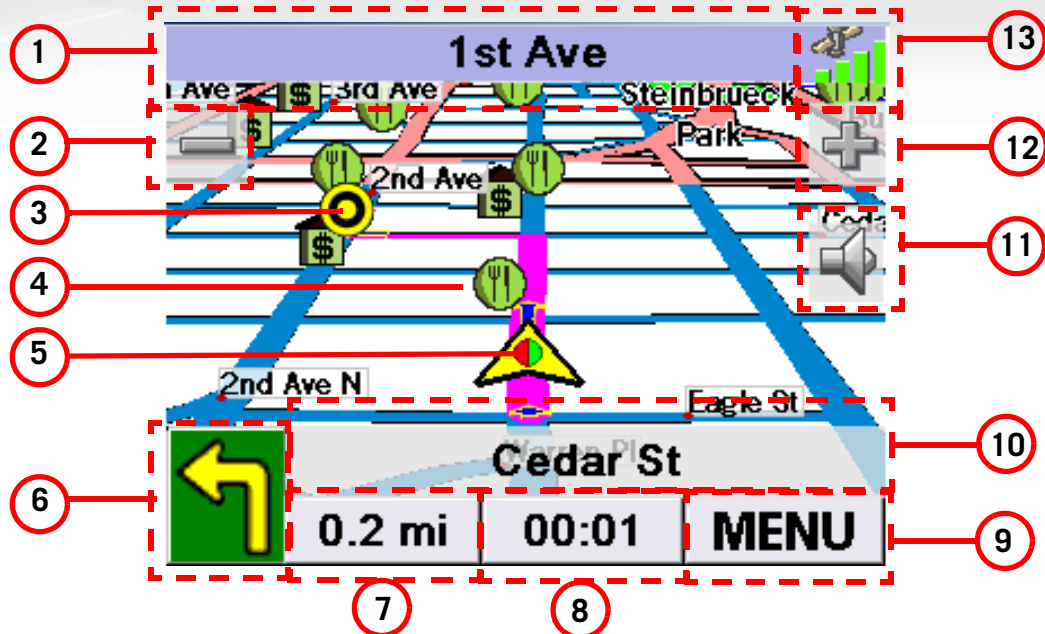
Reset - (under protective cover) Should the Magellan RoadMate not function or during firmware updates you may be required to reset the unit. (The Magellan RoadMate will operate only if the reset switch is in the up position.)

Hold Button - (under protective cover) Used to turn off the touchscreen portion of the display and sets the receiver into a power saving mode. Primarily used for outdoor use where the Magellan RoadMate might be in a pocket or backpack.

Magellan RoadMate 2200T Screens

Map Screen

The Map Screen is the most commonly used screen on the Magellan RoadMate. Whether you are getting directions or just driving around town, the Map screen will give you the peace of mind of knowing where you are.



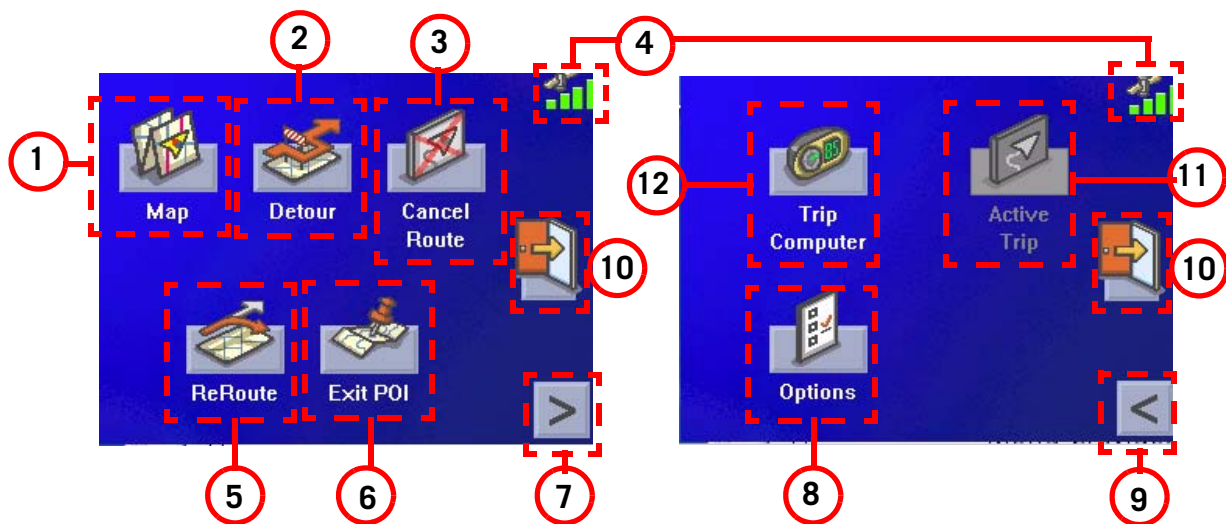
1	Current Street Name	Name of street you are currently on.	When tapped, displays the Locate screen
2	Zoom out		When tapped, zooms out the map display.
3	Destination Icon	Provides a visual indication of your destination.	
4	POI Icon	Sample indicated is the icon for a restaurant.	When tapped, offers you the option of setting a trip to that POI.
5	Location Icon	Provides visual indication of your current position.	
6	Next Maneuver	Indicates what type of maneuver you will need to perform when directed.	When tapped displays your heading as N, NE, NW, W, etc.
7	Distance to Next Maneuver	Displays the computed distance to your next maneuver in the unit of measure chosen.	When tapped repeats the last verbal instruction.

8	Time to Next Maneuver	Displays the computed time to your next maneuver.	When tapped, displays the total remaining distance of the trip.
9	Menu Button		When tapped, brings up the main menu.
10	Next Maneuver Street Name	Displays the name of the street that the next maneuver will occur.	When tapped, displays the maneuver list screen.
11	Mute		When tapped, mutes the volume.
12	Zoom In		When tapped, zooms in the map display.
13	Satellite Status	Displays a bar graph indicating satellite signal strength.	When tapped displays the Satellite Status screen.

Main Menu Screens

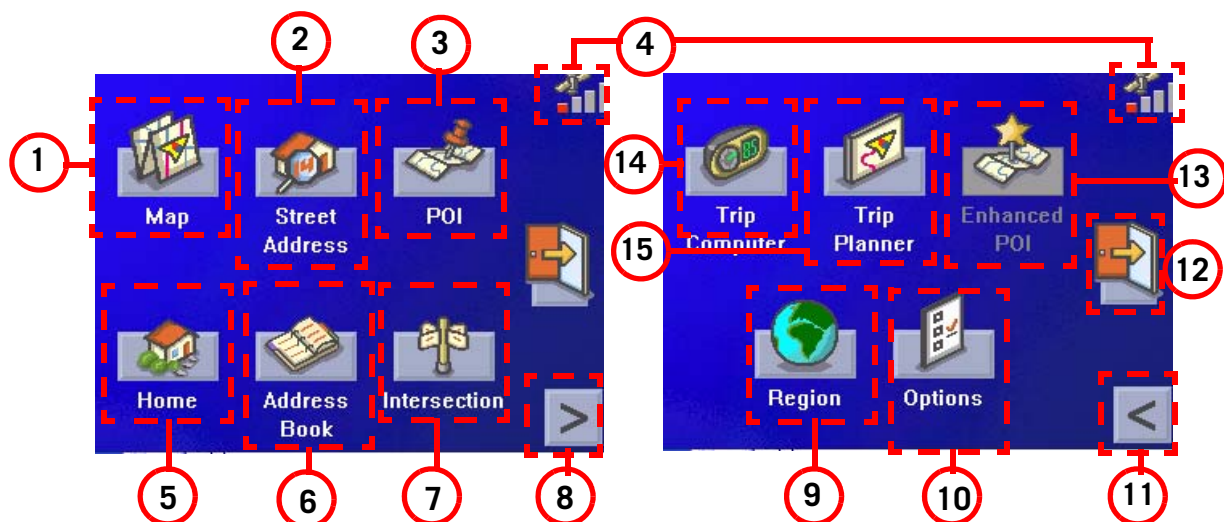
The Main Menu has two modes; active route and normal. When a route is active the Main Menu provides functions that pertain to the route. With no active route, the Main Menu provides access to functions that are used to create a route.

Main Menu - Active Route



①	Map Button	Used to access the Map Screen	
②	Detour Button	Detour gives you the option of re-routing the trip around traffic problems ahead of you.	
③	Cancel Route Button	Cancels the route you are travelling on.	
④	Satellite Status	Displays a bar graph indicating satellite signal strength.	When tapped displays the Satellite Status screen.
⑤	Re-route Button.	Provides a way to re-calculate the route you are on. Useful when you have veered off the route and need it re-calculated.	The Magellan RoadMate will automatically attempt to re-route you when you are off course or you can use this button.
⑥	Exit POI Button	This function provides you access to a listing of common POI categories that are near upcoming freeway exits. (Only used while travelling on a freeway.)	
⑦	Menu Page 2	Accesses the second page of the route main menu.	
⑧	Options Button	Accesses the options menu.	
⑨	Menu Page 1	Accesses the first page of the route main menu.	
⑩	Application Menu	Accesses the Application Menu for additional applications and system settings.	
⑪	Active Trip Button	Functional only when travelling on a multideestination trip. Provides access to tools to modify the trip you are on.	
⑫	Trip Computer	Accesses the trip computer feature providing information about the trip that can be saved.	

Main Menu - No Active Route



1	Map Button	Used to access the Map Screen	
2	Street Address Button	Create a trip using a street address as the destination.	
3	POI Button	Create a trip using a point of interest from the POI database as the destination.	
4	Satellite Status	Displays a bar graph indicating satellite signal strength.	When tapped displays the Satellite Status screen.
5	Home Button.	Save your home address in the Magellan RoadMate 2200T and easily create a trip with your home as the destination.	
6	Address Book Button	Access addresses saved to the address book. Can also be to re-route to a previous destination.	
7	Intersection Button	Create a route to an intersection.	
8	Menu Page 2	Accesses the second page of the route main menu.	
9	Region	Used to access additional map regions stored in the Magellan RoadMate.	
10	Options Button	Accesses the options menu.	
11	Menu Page 1	Accesses the first page of the route main menu.	

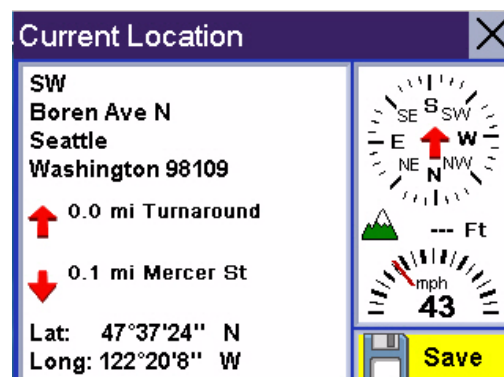
12	Application Menu	Accesses the Application Menu for additional applications and system settings.	
13	Enhanced POIs	Used to access personal POIs created with the Magellan PC Toolkit	
14	Trip Planner	Used to create a multideestination trip that can be travelled or saved.	
15	Trip Computer	Accesses the trip computer feature providing information about previous trips that can be saved.	

Locate Screen (Tap the top bar on the Map screen)

The Locate screen displays information about your present position and provides access to saving your present position in your address book.

The left side of the screen indicates your heading, an address for your present position (if able to calculate), the next and previous street, as well as the latitude/longitude of your present position.

The right side of the screen shows a compass, the elevation (if able to compute) and the speed you are travelling.



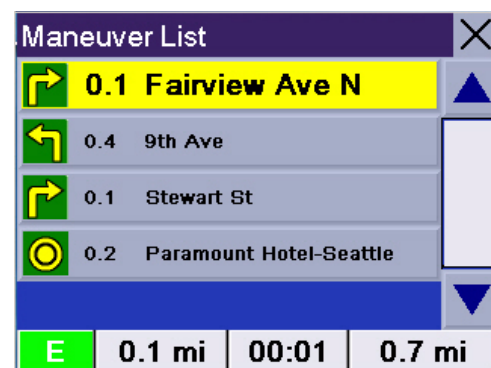
Use the **Save** button to store your current position into your address book. Tap the “X” in the upper right corner to return to the Map screen.

Maneuver List Screen (Tap the next maneuver bar on the Map screen)

The Maneuver List screen displays all of the maneuvers remaining to do to reach your destination.

Tap on one of the maneuvers to exclude that maneuver from the route. The maneuver will be excluded and the route re-calculated.

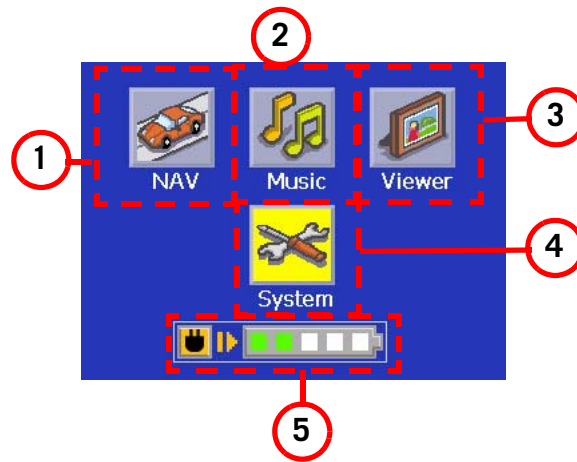
The bottom of the screen displays the heading, distance to next maneuver, time to next maneuver and distance for the entire route.




Tap the “X” in the upper right corner to return to the Map screen.

Application Menu Screen

From the Application Menu you can select additional applications for your Magellan RoadMate. Preloaded into the Magellan RoadMate is an MP3 player and an image viewer. Additionally, information about your battery life and changing your system settings can be found on the Application Menu.



To access the Application screen, tap the  button on the Main Menu screen.

1	Nav Button	Used to access the navigation application.	When tapped displays the Navigation Main Menu.
2	Music	Used to access the internal MP3 player	When tapped displays the MP3 player.
3	Viewer	Used to access internal image viewer application	When tapped displays the image viewer file selection page
4	System Settings	Used to access system settings for your Magellan RoadMate.	When tapped displays the System Settings Main Menu.
5	Battery Status	Displays a slider bar indicating the battery life available. (All green indicates a fully charged battery.)  indicates that the Magellan RoadMate is connected to external power (optional AC adapter or +12vdc from the cigarette lighter adapter) and the battery is being charged.	

Creating Routes

Overview

Creating a route involves selecting a destination and choosing how you would like the route calculated. Once this is done, the Magellan RoadMate will calculate the route using the guidelines you provide and displays the Map screen with information guiding you to your destination.

Creating a route to a street address

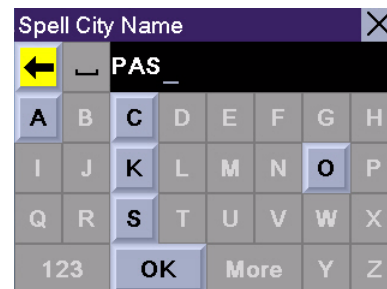
1. From the Main Menu, tap **Street Address**.
2. Select **Search By City**, **Search by Zip Code** or **Previous City**.
3. Input the information as requested depending upon your selection in step 2.

If using Search By City: Spell the city name and select the city from the list, spell the name of the street and select from the available street list, and enter the address number for the street. (If the address you want to enter does not fall within the acceptable range displayed, enter the closest possible address.)

If using Search by Zip Code: Enter the zip code for the address and select the city from the list of available cities. Spell the name of the street and select from the available street list, and enter the address number for the street (it must fall within the street number range displayed at the top of the screen).

If using Previous City: Select a city from the list of previously used cities. Spell the name of the street and select from the available street list, and enter the address number for the street (it must fall within the street number range displayed at the top of the screen).

4. Select the method to be used to calculate the route.



Using the keyboard to enter information. The keyboard will display only those letters that spell an item in the database. This provides a quick and easy tool to enter city and street information.

Use the "123" button to enter numbers and the "More" button to access symbols.

NOTE: When entering street names, do not use the prefix for the street. If you are creating a destination to W. Main, enter just Main. You will be given the opportunity to select W. Main from the list of available streets.

Creating a route using POIs

POIs (points of interest) have been preloaded into the Magellan RoadMate for commonly used categories such as banks, restaurants, gas stations, etc. Following the steps provided you will be able to create a route to any of these destinations.

Creating a route to a POI by name

1. From the Main Menu, tap **POI**.
2. Select the category of the POI and, if displayed, the subcategory.
3. Tap **Spell Name**.
4. Spell out the POI name. You do not need to spell out the complete name.

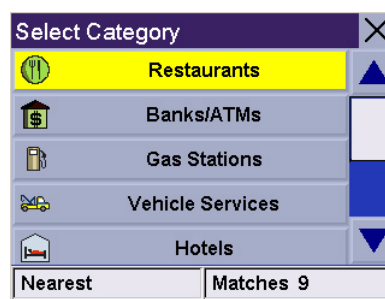
However, the more letters you enter, the narrower the search will be. If you entered 'Star' looking for Starbucks you might see China Star or other POI names that have a word beginning with 'Star' in the list.

5. Select **Current Position**, **Address** or **City Center**.

The most common will be **Current Position** or **City Center**. In this case you could be looking for the Starbucks nearest to where you are or possibly nearest to the center of a city you are planning on going to.

If you select city center, airport or address, you will need to input the name and select from the list of available items before continuing.

6. Select the POI from the list of POIs that you are looking for.
7. Once the POI has been selected from the available list, select the routing method you want to use and the Magellan RoadMate will begin calculating the route.



Scroll down the list of available categories to select the one you are looking for. Select 'Other' for additional categories.

Creating a route to a nearest POI

1. From the Main Menu, tap **POI**.
2. Tap **Basic POI**.
3. Tap **Search Search Nearest POI**.
4. Select **Current Position**, **By City Center**, **By Airport** or **By Address**.

The most common will be **Current Position**. In this case you could be looking for the nearest gas station to your current position.

5. Select the category for the POI. Note that some POIs have a subcategory that will need to be selected as well.
6. A list of POIs for that category nearest to the criteria you selected in step 4 will be presented. Tap on the POI you wish to go to.
7. Once the POI has been selected from the available list, select the routing method you want to use and the Magellan RoadMate will begin calculating the route.



This is a sample list of POIs that meet the criteria set. The address and phone number is displayed to help you select the right POI. The red arrow indicates the approximate direction of the POI from your current position.

Creating a route to a POI from an upcoming freeway exit

This feature functions only if you are travelling on a freeway. If you try to access it while not on a freeway, an alert is displayed indicating that it is not available.

1. From the Main Menu, tap **POI**.
2. Tap **POI Near Exit**.
3. Select the exit you would like the POI displayed for to see all four of the categories for that exit or select the icon of the category just to see those POIs for that category for that exit
4. Select a POI from the list of available POIs.
5. Once the POI has been selected, select the routing method you want to use and the Magellan RoadMate will begin calculating the route.

This function is available whether you are operating on a route or just travelling without a selected destination as long as you are on a freeway. Please note that if you are travelling on a route, selecting this will cancel the route and create a new one. You will then need to redo the route, using Previous Destinations in the address book, to finish the original route.

Creating a route to go home

Setting the home address

1. From the Main Menu, tap **Home**.
2. If you have not entered a home address previously, tap **Yes** to enter your home address.
3. Select **Search By City**, **Search by Zip Code** or **Previous City**.
4. Input the information as requested depending upon your selection in step 3.

If using Search By City: Spell the city name and select the city from the list, spell the name of the street and select from the available street list, and enter the address number for the street (it must fall within the street number range displayed at the top of the screen).

If using Search by Zip Code: Enter the zip code for the address and select the city from the list of available cities. Spell the name of the street and select from the available street list, and enter the address number for the street (it must fall within the street number range displayed at the top of the screen).

If using Previous City: Select a city from the list of previously used cities. Spell the name of the street and select from the available street list, and enter the address number for the street (it must fall within the street number range displayed at the top of the screen).

5. Tap **Save** to store the home address.

Changing the home address

1. From the Main Menu, tap **Home**.
2. Tap **Change** to change your home address.
3. Confirm the change by tapping **Yes**.
4. Select **Search By City**, **Search by Zip Code** or **Previous City**.

5. Input the information as requested depending upon your selection in step 4.

If using Search By City: Spell the city name and select the city from the list, spell the name of the street and select from the available street list, and enter the address number for the street (it must fall within the street number range displayed at the top of the screen).

If using Search by Zip Code: Enter the zip code for the address and select the city from the list of available cities. Spell the name of the street and select from the available street list, and enter the address number for the street (it must fall within the street number range displayed at the top of the screen).

If using Previous City: Select a city from the list of previously used cities. Spell the name of the street and select from the available street list, and enter the address number for the street (it must fall within the street number range displayed at the top of the screen).

6. Tap **Save** to store the home address.

Create a route to the home address

1. From the Main Menu, tap **Home**.
2. Tap **Route**.
3. Select the routing method you want to use and the Magellan RoadMate will begin calculating the route home.

Using the address book

Creating a route to a previous destination

1. From the Main Menu, tap **Address Book**.
2. Tap **Previous Destinations**.
3. Select the desired destination from the list of previous destinations.
4. Tap **Route**.
5. Select the desired route method.

Adding a previous destination to your address book

1. From the Main Menu, tap **Address Book**.
2. Tap **Previous Destinations**.

3. Select the desired destination from the list of previous destinations.
4. Tap **Edit**.
5. (Optional) Edit the name of the address by tapping on top line of the address.
6. (Optional) Tap the Favorite check box to add this address to your list of favorite addresses.
7. Tap **Save**.
8. Tap **Route** to begin routing to the destination or tap the 'X' multiple times to exit out and return to the Main Menu.

Creating a route to a favorite destination

1. From the Main Menu, tap **Address Book**.
2. Tap **Favorites**.
3. Select the desired destination from the list of favorite destinations.
4. Tap **Route**. (You also have the option of editing or deleting this destination.)
5. Select the desired route method.

Creating a route to an address in the address book

1. From the Main Menu, tap **Address Book**.
2. Tap **List Addresses**
3. Select **List All** or **Search Address Book**.

If you do a search, you will be asked to enter the first few characters on the address name.
4. Select the desired destination from the list of addresses in your address book.
5. Tap **Route**. (You also have the option of editing or deleting this address.)
6. Select the desired route method.

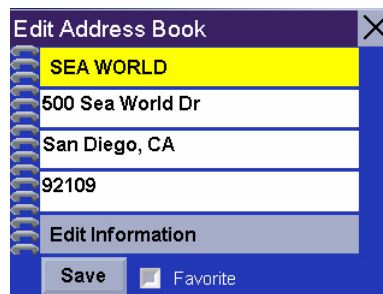
Editing an address in the address book

1. From the Main Menu, tap **Address Book**.
2. Tap **List Addresses**
3. Select **List All** or **Search Address Book**.

If you do a search, you will be asked to enter the first few characters on the address name.

4. Select the desired address from the list of addresses in your address book.
5. Tap **Edit**.

6. Tap on the top line to change the name or the bottom line to change the address information. Use the keyboard to enter the new text.



You can change the name or add information (phone number, etc.) by tapping on the top or bottom line and use the keyboard to enter new text.

7. Tap on the Favorite check box if you want to add this address to your favorites list.
8. Tap Save to store the changes into your address book.
9. Tap the “X” in the upper right corner a few times to return to the Main Menu if you are done.

Deleting an address from the address book

1. From the Main Menu, tap **Address Book**.
2. Tap **List Addresses**
3. Select **List All** or **Search Address Book**.

If you do a search, you will be asked to enter the first few characters on the address name.

4. Select the desired address from the list of addresses in your address book.
5. Tap **Delete**.
6. Confirm the deletion by tapping **Yes**.
7. Tap the “X” in the upper right corner a few times to return to the Main Menu if you are done.

Creating a new address

1. From the Main Menu, tap **Address Book**.
2. Tap **Create New Entry**
3. Select **Select on Map**, **Select Address**, **Dining**, **ATM**, **Gas..** or **Intersection**.

Select on Map: The Map screen is displayed. Use your finger or stylus to pan the crosshair cursor around the map. When the crosshair cursor is over the point on the map you want, tap on the crosshair cursor.

Select Address: Follow the instructions for selecting an address, either by city, zip code or previous cities.

Dining, ATM, Gas...: Follow the instructions previously mentioned in selecting a POI.

Intersection: Follow the instructions provided later in this chapter for intersections. (Setting a destination as an intersection will provide you with instructions to travel to two cross streets you have selected.)

4. The Edit Address Book screen is displayed. Edit the name or information line if desired. If this address is to be added to your favorites list, tap on the check box for Favorite.
5. Tap **Save**.

Creating a route to an intersection

1. From the Main Menu, tap **Intersection**.
2. Select **Search By City**, **Search by Zip Code** or **Previous City**.
3. Input the information as requested depending upon your selection in step 3.

If using Search By City: Spell the city name and select the city from the list, spell the name of the street and select from the available street list, and enter the address number for the street (it must fall within the street number range displayed at the top of the screen).

If using Search by Zip Code: Enter the zip code for the address and select the city from the list of available cities. Spell the name of the street and select from the available street list, and enter the address number for the street (it must fall within the street number range displayed at the top of the screen).

If using Previous City: Select a city from the list of previously used cities. Spell the name of the street and select from the available street list, and enter the address number for the street (it must fall within the street number range displayed at the top of the screen).

4. With the city selected, enter the name of the first street. When given the list of streets, select the desired one from the list of available streets.


5. Enter the name of the second street. When given the list of streets, select the desired one from the list of available streets.
6. Select the desired route method.

Using the Trip Planner


Overview

Normal routes are calculated from your present position to a single destination. It is sometimes beneficial to have a trip that goes to multiple destinations. The Trip Planner gives you the means to create and save multiple destination trips.

Creating a multiple destination trip

1. From the Main Menu, tap  to go to page 2 of the Menu.
2. Select **Trip Planner**.
3. Select **New**.
4. Use the keyboard to enter a name for the trip. Tap **OK** when done.
5. Select **Add** from the list of available options.
6. Using the instructions found in *Creating a Route*, enter the first destination in the trip.
7. With the address selected, tap **Save** on the Add address to Trip screen.
8. The first destination has been added to the trip. To add more destinations, tap on the destination in the Trip List and select **Add**. Using the instructions found in *Creating a Route*, add the second destination to the list.
9. Continue adding destinations by tapping on the last listed destination and selecting **Add** until you have entered all of the destinations desired for your trip.
10. With the trip complete, tap on **Save**.

Activating a multiple destination trip


1. From the Main Menu, tap  to go to page 2 of the Menu.
2. Select **Trip Planner**.
3. Select **Guide Me**.
4. Select the Trip to be activated from the list of saved trips.

5. A list of the individual destinations is displayed. Tap on the first destination on the list to activate the trip.
6. Select the routing method to compute the trip.



You can also pick which destination to begin the trip on, skipping over destinations prior to it, by tapping on the first destination you want to go to. In this example, tapping on 'Texaco' will go to all four destinations in the trip. If you tapped on 'Jaguar Seattle' the trip would be to 'Jaguar Seattle' and then to the Space Needle, skipping Texaco and the Bank of America.

Editing a multiple destination trip

1. From the Main Menu, tap  to go to page 2 of the Menu.
2. Select **Trip Planner**.
3. Select **Edit**.
4. Select the Trip to be edited from the list of saved trips.
5. Select the destination from the list of available destinations that is to be edited.
6. Select the action required from the list of available actions. You can select **Add**, **Move Up**, **Move Down**, **Delete** or **Cancel**.

Add: Using the standard methods of selecting a destination, a new destination can be selected and added to the trip after the destination selected in step 5.

Move Up: Moves the destination selected up one level in the trip list.


Move Down: Moves the destination selected down one level in the trip list.

Delete: Removes the destination selected from the trip list.


Cancel: Makes no changes and returns to the trip list.

7. With the trip edits complete, tap on **Save**.

Deleting a multiple destination trip

1. From the Main Menu, tap  to go to page 2 of the Menu.
2. Select **Trip Planner**.
3. Select **Delete, Rename**.
4. Select **Delete**.
5. Select the Trip to be deleted from the list of saved trips.
6. Confirm the deletion by tapping **Yes**.

Renaming a multiple destination trip


1. From the Main Menu, tap  to go to page 2 of the Menu.
2. Select **Trip Planner**.
3. Select **Delete, Rename**.
4. Select **Rename**.
5. Select the Trip to be deleted from the list of saved trips.
6. Using the keyboard, enter a new name for the trip. Tap **OK** when done.

Magellan RoadMate Enhanced POIs

Overview

Personal POIs can be created using the Magellan RoadMate PC Toolkit and loaded into your Magellan RoadMate using an optional SD card. The Enhanced POI option provides a way of loading these POIs into the receiver and can then be used to create a route.

Accessing the Enhanced POI Menu

1. From the Main Menu, tap  to get to the second page of the Main Menu.
2. Tap the **Enhanced POI** icon.

Loading an Enhanced POI file

1. Install an SD card with POIs you've created using the Magellan PC Toolkit.
2. Access the Enhanced POI menu.
3. Tap **Change My POI file**.
4. Tap **Select a POI File**.
5. Tap on the desired POI file from the list of POI files available.

Displaying/Selecting Categories

1. Load a POI file as described in 'Loading an Enhanced POI file'.
2. Tap **Display Categories**.
3. Select categories you want displayed or not displayed when selecting a POI to route to. ('X' will be shown.)

Setting Alarms

1. Load a POI file as described in 'Loading an Enhanced POI file'.
2. Tap **Set Alarms**.
3. Tap on those categories you want to be alerted to when approaching. (See Setting Alert Parameters.)

Setting Alert Parameters

1. Load a POI file as described in 'Loading an Enhanced POI file'.
2. Tap **Alert Parameters**.
3. Tap on the category you want set the parameters for.

4. Select the Detection angle by tapping on the detection angle button and entering a new angle [default is 45 degrees]. (This is the area in front of you that will be used to see if one of your POIs is in front of you.)
5. Set the distance for the first and last warning by tapping on their respective buttons and enter the distance desired.
6. Tap **Save** when complete.

Creating a Route Using Enhanced POIs

1. With an enhance POI file loaded, access the Enhanced POI menu.
2. Tap **Select category**.
3. Select the category that the POI is in.
4. Select **Nearest** (closest to your present position) or **Spell POI Name**.
5. If you selected Nearest, select the destination from the Select POI list.
If you selected Spell POI Name, enter the first few letters for the desired POI and tap OK. Select the desired POI from the list.
6. Tap **Route**.
7. Select routing method.

Saving a POI to your Address Book from Enhanced POIs

1. With an enhance POI file loaded, access the Enhanced POI menu.
2. Tap **Select category**.
3. Select the category that the POI is in.
4. Select **Nearest** (closest to your present position) or **Spell POI Name**.
5. If you selected Nearest, select the destination from the Select POI list.
If you selected Spell POI Name, enter the first few letters for the desired POI and tap OK. Select the desired POI from the list.
6. Tap **Save**.
7. Edit the POI as needed by tapping on the desired field and entering the information.
8. Add the POI to your favorites list if desired by checking the Favorite checkbox.
9. Tap **Save**.
10. You can now route to this POI by tapping **Route** or return to the main menu by tapping **Cancel**.

Setting User Options

Overview

Portions of the Magellan RoadMate are customizable to your needs. To access the User Options menu, select **Options** from page 2 of the Main Menu and select the option you want to change.

POI Selection

In POI Selection you can select which POI icons will be displayed on the Map screen

Check the POI category name to select or deselect it. POI's with an "X" will be displayed on the screen. Use 'Mark All' or 'Clear All' for global selections.

Address Book Options

This option provides a way to quickly clear addresses from your address book.

Clear Addresses clears all of the addresses in your address book.

Clear Favorites clears the addresses marked as favorites from your address book.

Clear Previous clears the previous destinations list.

Map Options

Provides access to customizing how the Map screen functions.

3D / 2D: Changes the display of the map to be a 3D (forward looking display) or 2D (overhead display).

Heading Up / North Up: Sets the top of the map display to be either the direction you are heading or North. Note that 'North Up' is only available when the map is set to 2D mode.

TrueView: As you approach a maneuver, the map screen changes to a TrueView display and then back to the map display just prior to the maneuver. This is the default setting. You can turn this feature off by unchecking 'Auto TrueView'. TrueView can also be selected to view Split TrueView (default where half the display is the map and the other half an arrow indicating the maneuver requirements) or a Single TrueView (only the arrow is displayed).

Map Colors

You can select from nine different combination of colors for the map display.

Auto Night Mode: Changes the colors of the display to the one chosen for 'Night Screen' during evening hours. With Auto Night Mode off, only the Day Screen colors are used.

Day Screen / Night Screen: Tap on these buttons to go to the map color selection screen. Select the desired color from the list on the left.

Route Preferences

You can turn automatic re-routing on or off. With automatic re-routing on, the receiver will automatically recalculate the route whenever you leave the planned route.

Automatic Re-Route: When checked, automatic re-routing is on.

Detour Options

The Magellan RoadMate detects when you are on a route and you are moving slowly or not moving at all on a freeway. It then provides you with the option of detouring around the problem area. It can alert you visually on the map by displaying the detour icon or you can set it to not alert you and you'll select detour from the main menu.

3 mi / 5 mi / 10 mi or Custom: This setting determines the distance that detour will take you around. (If you are on stopped on a freeway and select to detour, the Magellan RoadMate will calculate the detour and try to get you back on the original route in the distance specified.)

Enable automatic detour: This defines if the detour icon will be shown on the map when the Magellan RoadMate determines that a detour should be used.

Alert After: This sets the duration that you are stopped or moving slowly on the freeway before a detour icon is displayed.

Example: Settings of '3 mi', 'Enable automatic detour' on, and 'Alert After' set to 1 min. You are being routed on a freeway and have been moving at 10 mph due to a traffic jam ahead. After 1 minute of moving slowly, the detour icon will be displayed on the left side of the map indicating that a detour should be used. If you want to activate the detour, press MENU and select 'Detour'. Press 'Route' and the Magellan RoadMate will calculate a new route, detouring around the next 3 miles.

Simulator Mode

This option provides a way to set the Magellan RoadMate into simulation mode. In simulation mode you can create a route and observe the Magellan RoadMate in action as it simulates travelling along the route.

Simulation: Check “Propose simulator mode when calculating a route.” to turn the simulator on. When on, you will be asked each time you create a route if you want it to be simulated.

Menu Colors

The Magellan RoadMate has four color schemes built in; Default, Pastel, Forest and Desert.

Menu Colors: Tap on the desired color theme.

Tone Options

The Magellan RoadMate uses an alert tone to indicate that a maneuver is upcoming or been completed. You can select the type of alert tone to be used.

Tone Options: Tap on Bell, Chime or Beep.

Navigation Instruction

You can select what will be announced while routing. You may turn ‘Announce street name’ on (checked) or off and you may turn “Announce exit ramp name” on (checked) or off.

GPS Options

You can check the status of the GPS signals or set a starting location for the GPS receiver.

GPS Status: Displays high-level information about the satellite and the signal it is transmitting.

Set GPS Position: This is only useful if you have travelled a great distance with the Magellan RoadMate off and it is having problems getting GPS signals. You will be prompted to enter an address for your present location that the Magellan RoadMate can base its satellite search from. (It is extremely unlikely that you will ever need to use this option unless instructed to do so by a service technician if you are experiencing difficulties.)

Backup and Restore

Backup and Restore will save (backup) all of your address, trips, and option settings to an SD card installed in the Magellan RoadMate. You can then upload (restore) this information in the future should you lose the information or accidentally clear the addresses.

System Settings

Overview

System settings provides access to some global settings for the Magellan RoadMate. The following is a listing of the accessible settings. From the Main Menu screen, tap on the Application Menu icon and then the System icon.

Volume

A slider bar is displayed that can be tapped on to raise or lower the volume of alerts. Tapping on the speaker icon (above the slider) will mute or unmute the speaker.

Brightness

The top of the display is a slider bar that can be tapped to increase or decrease the brightness of the display.

‘On-battery dimming (80%)’ should be checked if you want the display dimmed while operating on the internal battery only. This will lengthen the usable battery life between battery charging.

Power

This setting tells the Magellan RoadMate how long it should stay on while there is no noticable activity. (Noticable activity would include button presses and the location of the Magellan RoadMate not changing.)

Language

Changes the language used for voice alerts as well as menu items in to one of five languages.

Time Zone

Use the ‘+’ and ‘-’ buttons to change the time zone to your local area. Check the Daylight Savings box if you want the time automatically changed for daylight savings.

Unit of Measure

You can set distances to be displayed as Miles/Feet or Kilometers/Meters.

Page 2 (tap)

Product Information

Provides detailed information about the software and firmware installed in the Magellan RoadMate. Also shown is the unique serial number for the receiver.

Diagnosis

Provides a way to diagnose the audio, touchscreen or video portions of the Magellan RoadMate.

Additional Items

Battery Life

A battery charge indicator is shown at the bottom of the display. When the Magellan RoadMate is charging, the green bars will sequence from left to right. Remove the power cable and the green lights will display the approximate battery charge.

Contact Us

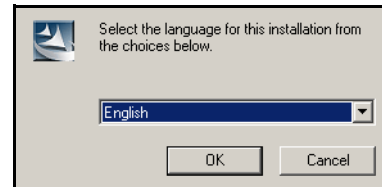
Tap the question mark in the bottom left corner and then “Contact Us” to display a screen with telephone and e-mail information for contacting Magellan about your Magellan RoadMate.

Magellan RoadMate PC Tools Installation

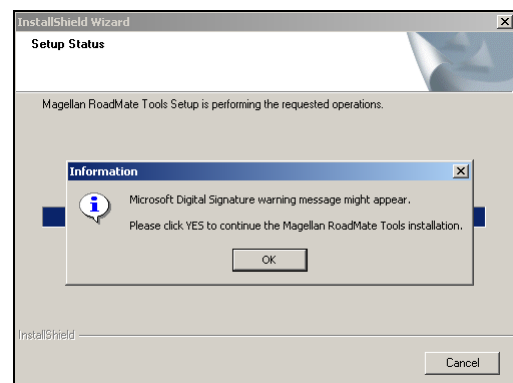
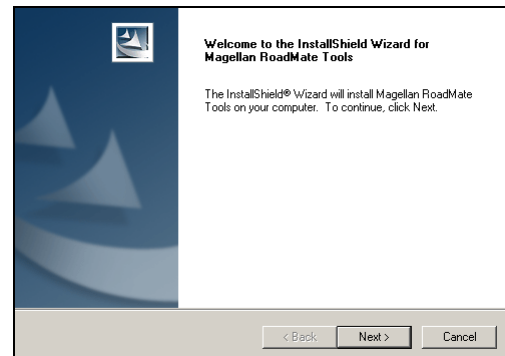
The Magellan RoadMate Tools application enables you to create custom POI's and load them onto the SD card in your Magellan RoadMate 2200T.

Installing the Software

1. Insert the Magellan RoadMate Tools PC Application CD into your PC's CD drive.
2. The setup application will begin automatically. If it does not, browse your computer's CD drive and double-click on the setup.exe file.
3. Select a default language for the Application.



4. The Welcome screen will appear to begin the installation process.
5. Choose a destination for the application. Select **Next** to use the default location, or select **Browse** to choose a custom destination.
6. Next, choose a Program Folder to place the application icons.
7. The Magellan RoadMate Tools software will be installed. After it has finished installing, a dialog box pertaining to Microsoft Digital Signatures may appear, select **OK**
8. When it has finished, to can have the installer launch the application automatically, or deselect to exit without launching the application. Select **Finish**.



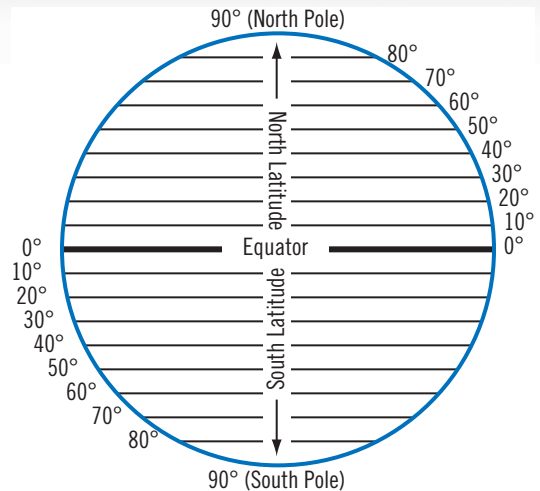
Magellan RoadMate POI Manager

The Magellan RoadMate POI Manager enables you to transfer custom points of interest files from your computer to your Magellan RoadMate 2200T.

Before we add any custom POI's to the Magellan RoadMate 2200T, you should understand how the POI Manager plots POIs.

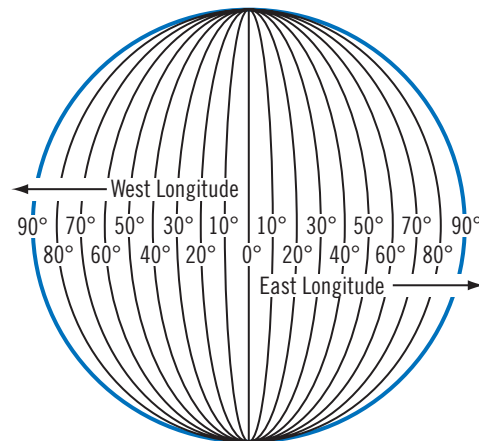
Latitude

Latitude can be expressed by dividing Earth into horizontal segments totalling 180 degrees. Starting at the Equator, or zero degrees Latitude, lines (or Parallels) are drawn in 10-degree increments 90 degrees to the north and 90 degrees to the south. If your location is below the Equator, you are at a South Latitude.



Longitude

Conversely, longitude lines can be expressed by dividing Earth into vertical segments totalling 360 degrees. Starting at the Prime Meridian (which is The Royal Observatory in Greenwich, England), or zero degrees Longitude, lines are drawn in 10-degree increments 180 degrees to the West and 180 degrees to the East. If your location is on the western hemisphere, you are at a West Longitude.

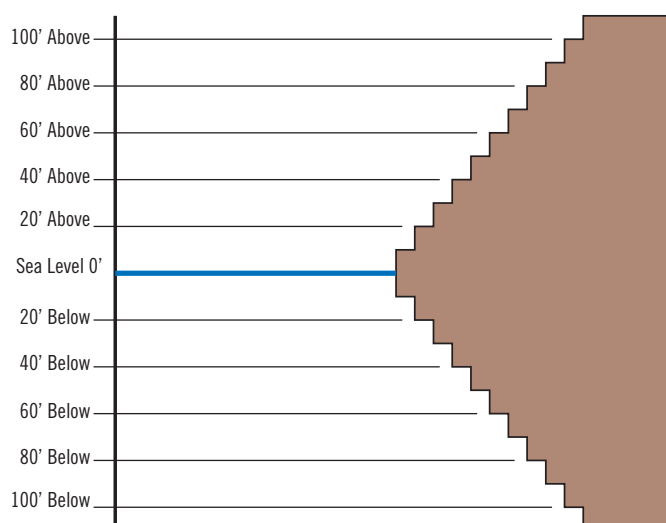


Additionally, to narrow down your location further, each 10-degree segment is divided into 60 smaller segments called minutes and, still further, each minute is divided into 60 segments called seconds.

To express this in coordinates, the city of Los Angeles is located at 34° (degrees) 03' (minutes) and 08 (seconds) North of the Equator, and 118° (degrees) 14' (minutes) and 42 (seconds) West of the Prime Meridian.

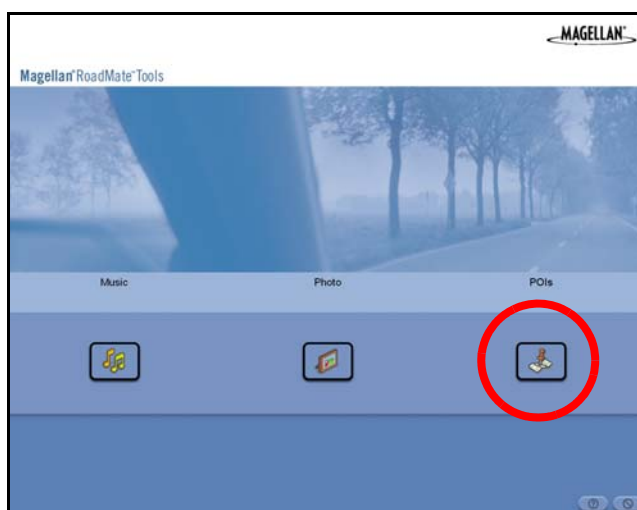
Altitude

Each location can also have an Altitude. Altitude is expressed by how far the point is above or below the level of the ocean, or Sea Level. For example, Los Angeles, California is about 300 feet above sea level. Death Valley, California is about 270 feet below sea level.



Turn on your Magellan RoadMate 2200T by pressing and holding the Power button for approximately 2-3 seconds, 10 seconds if not in sleep mode. When the Warning screen appears, insert the small end of the USB cable into the USB port on your Magellan RoadMate 2200T, and the large end into an available USB port on your computer.

Launch the Magellan RoadMate PC Tools application. From the Magellan RoadMate Tools screen, click on **POI**.

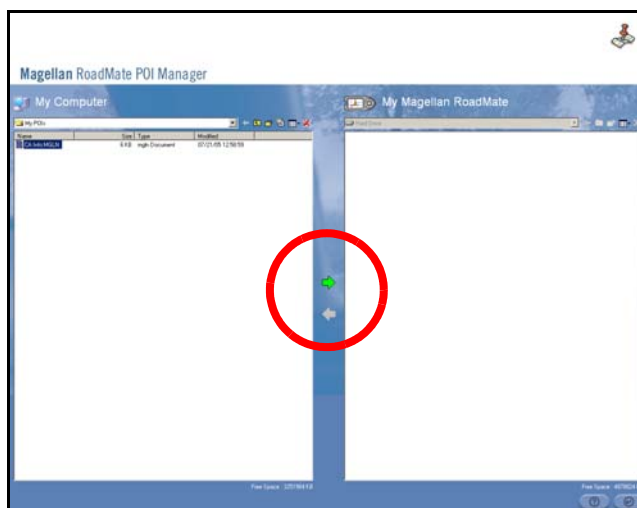


The left side of the window shows the contents of your computer and the right side of the window shows the contents of the Magellan RoadMate 2200T.

Opening a POI File

When you start the POI Manager the contents of your "My POI's" folder will be displayed. This is the default location for storing custom POI files.

Locate the POI files you wish to load. When you have selected a file, the Copy To Unit arrow will turn green. Click on the arrow to copy the file to your Magellan RoadMate 2200T.



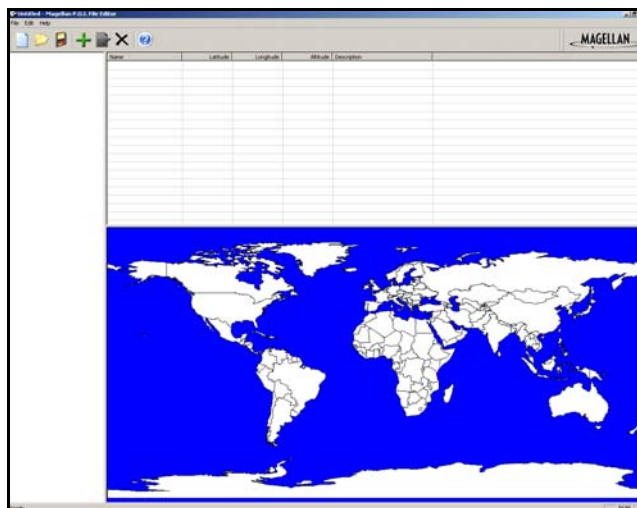
When you have finished copying files, remove the USB cable from the Magellan RoadMate 2200T.


Creating a New POI File

There are two ways to create a POI file. You can either add POI's individually, or you can import a character delimited file containing the information need to plot the POI's. To plot a POI, each item must have a name, longitude, and latitude. Longitude and latitude must be in decimal format.

Adding Individual POI's

Click on the **New POI File** Button to launch the POI Editor.

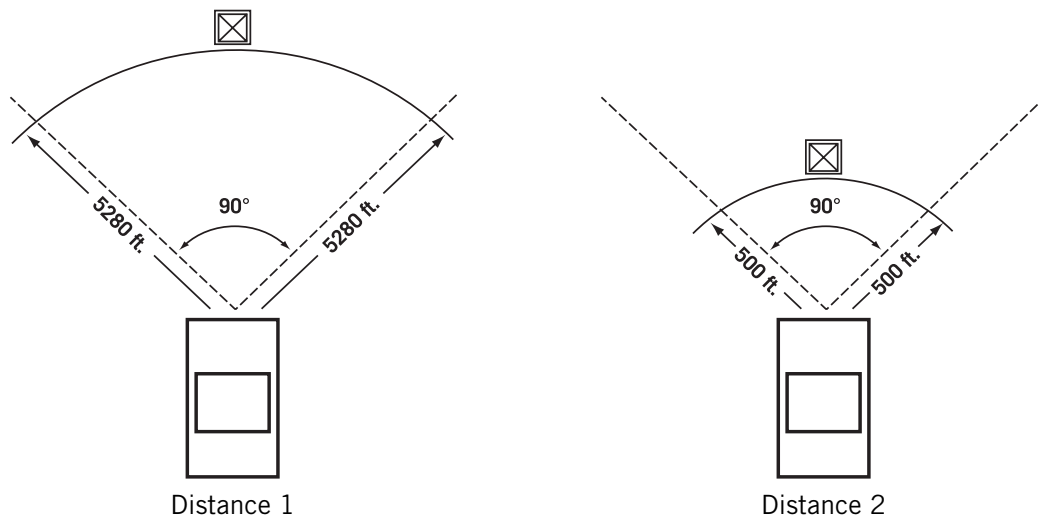


Click on the **Add** button  .

Enter the Name, the Latitude, and the Longitude. The Altitude and Description fields are optional.

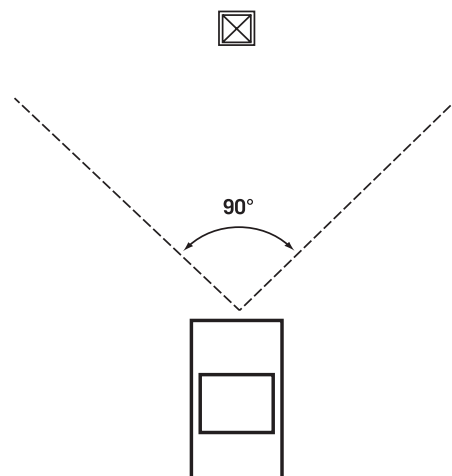
Select the Category field and select **New**. A dialog box will appear to create a new POI category. Enter the Name and assign an Image (icon) for the POI. The Description field is optional.

The Alert feature is an audible alarm that lets you know when you are within a certain distance from the POI. You can set an initial reminder (Distance 1), a secondary reminder (Distance 2).



Select your preferred unit or measure (Meters or Feet).

The Detection angle sets the range of alert in degrees from the POI.




Select Activate alert for this category to enable the alert settings.

When you have finished, select **OK**.

Importing a Data File

The POI Manager software supports ASCII file format (.ASC,.CSV,.TXT); GPS Exchange file format (.GPS,.XML); Magellan Waypoint file format (.WPT,.RTE); and Garmin PCX5 Waypoint file format (.WPT,.RTE).

Click on the **Open** button  .

Select the file you wish to import and click **Open**.

Start by choosing which line in the data file to start importing data. If your data file has a header row, this row will generate an error so you should start at line two or below.

Next, choose how the data is separated and click on **Next**.

You now need to define the data columns. Click on the pull down menu and assign a field name to the appropriate column. Click on **Finish**.

Click on The **Save POI file** button. Assign a name to your file and click on **Save**.

Close the POI File Editor. Select the POI file you just created and click on the transfer button (right arrow) to upload the file to your Magellan RoadMate 2200T.

Magellan RoadMate Music Manager

The Magellan RoadMate Music Manager enables you to transfer song files in MP3 or WMA format from your computer to an optional SD memory card installed in your Magellan RoadMate 2200T. The amount of music you can load depends on the size of the card.

Insert the memory card into the memory card slot. Turn on your Magellan RoadMate 2200T by pressing and holding the Power button for approximately 2-3 seconds if in sleep mode. (Ten seconds if not in sleep mode.) When the Warning screen appears, insert the small end of the USB cable into the USB port on your Magellan RoadMate 2200T and the large end into an available USB port on your computer.

Launch the Magellan RoadMate Tools application. From the Magellan RoadMate Tools screen, click on **Music**.

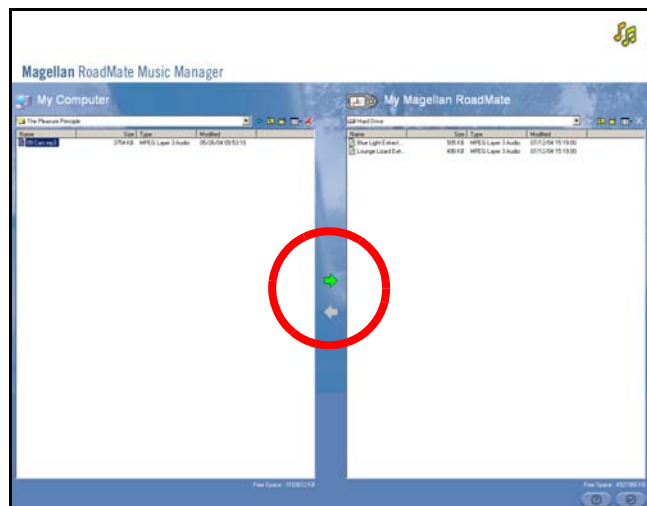
The left side of the window shows the contents of your computer and the right side of the window shows the contents of the memory card installed in your Magellan RoadMate 2200T.



Locate the song files you wish to load. When you have selected a file, the **Transfer** arrow will turn green. Click on the **Transfer** arrow to copy the file(s) to the memory card.

In the same way, if you have loaded song files onto a memory card from another computer, you can copy the files from the memory card to your computer.

When you have finished copying files, remove the USB cable from the Magellan RoadMate 2200T.



Magellan RoadMate Photo Manager

The Magellan RoadMate Photo Manager enables you to transfer image files in multiple formats from your computer to an optional memory card installed in your Magellan RoadMate 2200T. The number of images you can load depends on the size of the card.

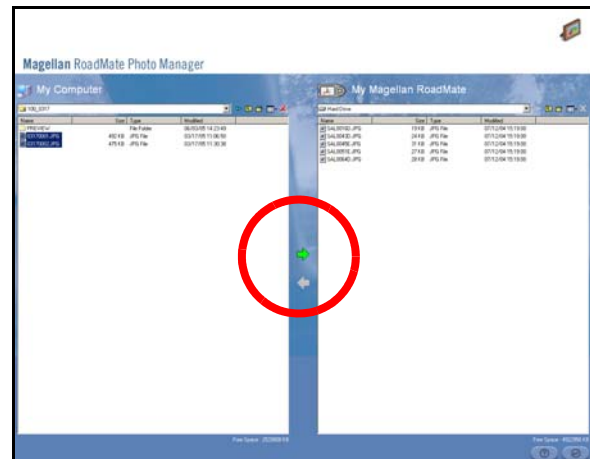
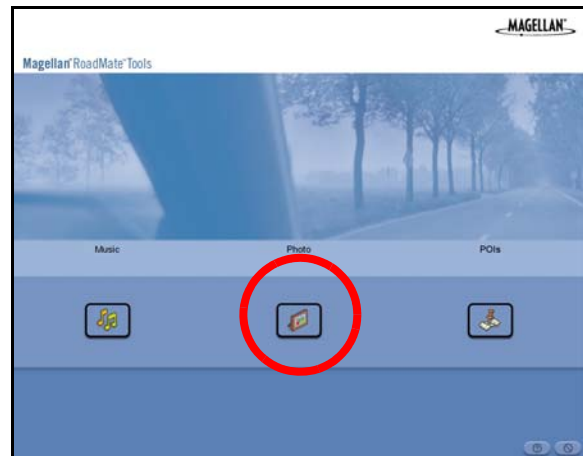
Insert the memory card into the memory card slot. Turn on your Magellan RoadMate 2200T by pressing and holding the Power button for approximately 2-3 seconds (Ten seconds if the Magellan RoadMate 2200T is not in sleep mode.) When the Warning screen appears, insert the small end of the USB cable into the USB port on your Magellan RoadMate 2200T, and the large end into an available USB port on your computer.

Launch the Magellan RoadMate Tools application. From the Magellan RoadMate Tools screen, click on **Photo**.

The left side of the window shows the contents of your computer and the right side of the window shows the contents of the memory card installed in your Magellan RoadMate 2200T.

Locate the image files you wish to load. When you have selected a file, the **Transfer** arrow will turn green. Click on the **Transfer** arrow to copy the file(s) to the memory card. In the same way, if you have loaded image files onto a memory card from another computer, you can copy the files from the card to your computer.

When you have finished copying files, remove the USB cable from the Magellan RoadMate 2200T.



Music Player

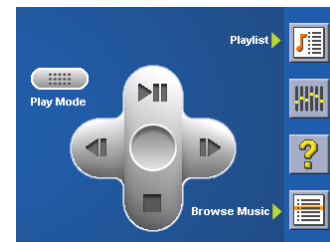
The Magellan RoadMate 2200T Music Player enables you to play music files in MP3, or WMA format, stored on an optional memory card installed in your Magellan RoadMate 2200T. If you have not already done so, you must install the Magellan RoadMate Tools application and transfer files onto the card using the Magellan RoadMate Music Manager.

Note: You must use the Magellan RoadMate PC Toolkit to load music files onto the SD Card.

Press the **MENU** key on the Magellan RoadMate 2200T and select the Music Player.




The Music Player control pad will appear.



Single Song Play

Select **Browse Music**



Use the Navigation key or the Down arrow  to select the song file you wish to play and press **OK**.

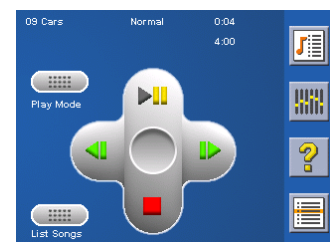


The song will begin playing automatically.

At the top of the screen is displayed the name of the song, the artist (if available), the selected play mode, the elapsed time, and the song duration.

Press the **Play/Pause** button to suspend song play. To resume song play, press the **Play/Pause** button again.

Press the **Stop** button to stop song play. Once a song has been stopped, pressing the **Play/Pause** button will start the song from the beginning.



Multiple Song Play

Multiple song play enables you to create a “playlist”. A playlist consists of one or more songs in a group that can be played continuously.

Select **Playlist**



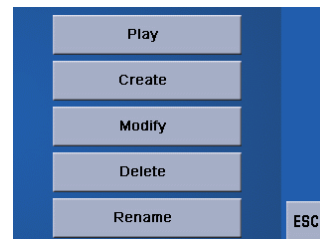
The Playlist menu will appear. To exit from the playlist menu, select **ESC**.

Play

To hear a previously created playlist, select **Play**.

Use the Up or Down arrow to select the desired playlist. Select **OK**.

The songs will begin playing automatically in order.



Create

To make a new playlist, select **Create**.

Use the backspace key (<-) to erase the default name; and the keypad to enter a new name for your playlist. When you have finished, select **OK**.

The next screen to appear shows the song files stored on the memory card on the left side, and the playlist on the right side.

Use the arrow buttons on the left side of the screen to highlight the Music folder and then, select **List Files**.

Use the arrow buttons to highlight the song files you wish to add to the playlist. Select **Add to Playlist** (right arrow) to add the highlighted song to the playlist.

Continue adding files to the playlist. When you have finished, select **OK**.

Modify

Modify enables you to add or remove songs from the selected playlist. Select **Modify**.

To remove a song from the playlist, use the arrow keys on the right side of the screen to highlight the desired song and then select **Remove From Playlist** (left arrow).

Use the arrow buttons on the left side of the screen to highlight the song files you wish to add to the playlist. Select **Add to Playlist** (right arrow) to add the highlighted song to the playlist.

Continue adding files to the playlist. When you have finished, select **OK**.

Delete

To remove a playlist, select **Delete**.

Select the playlist you wish to delete and select **OK**.

A dialog box will appear asking to confirm your selection. Select **Yes** to delete the playlist.

Rename

If you want to change the name of a playlist, select **Rename**.

Select the playlist you wish to rename and then, select **OK**.

Use the backspace key (<-) to erase the name; and the keypad to enter a new name for your playlist. When you have finished, select **OK**.

Play Mode

While in single song play, select **Play Mode** for song play options.

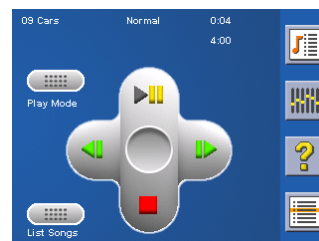
Repeat All - Repeats all the songs in the current playlist starting at the beginning of the order. This function works only if there are two or more songs in the playlist.

Repeat - repeats the song that is currently playing.

Preview - Plays the first five seconds of each song in the current playlist.

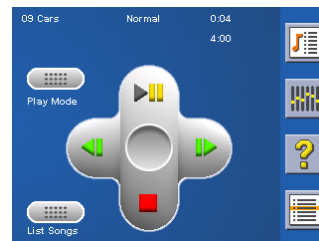
Normal - Plays all songs in the current playlist in order.

Random - Plays the songs in the current playlist in random order.



List Songs

Select **List Songs** to view the current playlist.

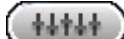


Equalizer

The Equalizer provides advanced sound options so you can customize the quality of the playback. The equalizer will only be available for MP3 format sound files. Select an equalizer preset from the following preconfigured options: Default (flat), Jazz, Classical, Rock, Techno, Dance Hall, Live, Full Bass, Full Treble, and Full Bass & Treble. You are not able to however, manually set the equalizer.

Select the **Equalizer**



Select the equalizer preset by pressing the button at the top of the screen  .

When you are satisfied with your selection, select **OK**. To exit without setting the equalizer, select **ESC**.

Help

Select **Help**



for descriptions of the Music Player buttons.

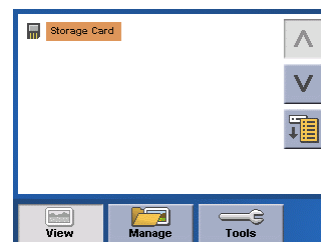
Photo Viewer

The Magellan RoadMate Photo Viewer enables you to view image files in JPG and BMP format, stored on an optional memory card installed in your Magellan RoadMate 2200T. If you have not already done so, you must install the Magellan RoadMate Tools application and transfer files onto the card using the Magellan RoadMate Photo Manager.

Press the **MENU** key on the Magellan RoadMate 2200T. Select the **Photo Viewer**



The Photo Viewer screen will appear. The Photo viewer will show the contents of the SD or MMC card installed in your Magellan RoadMate 2200T.



View Single Photo

The next screen to appear shows the file structure of the memory card. Select **List Files**



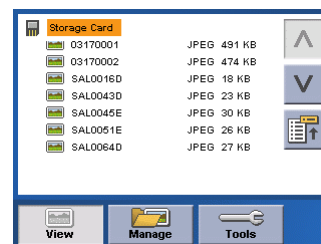
Use the Navigation key or the Down arrow



to highlight the photo you wish to

view and select **View**.

While viewing the image, double clicking on the image (that is tapping twice on the screen) will show the image in full screen. You can then cycle through the images by pressing left or right on the Navigation key.



Previous Image (left arrow)



Press the right arrow button to view the previous image in the folder. This button is grayed out (not functional) when viewing the first image in the folder.

Zoom



Press the Zoom button to reduce or enlarge the current photo. The top of the zoom menu shows the current zoom level. Select another zoom level from the list of presets. Select Best Fit to adjust the zoom to fit within the display boundaries; select Actual Size to display the image at 100%; select 25% to 150% to reduce or enlarge the image to the preset level.

Slideshow



Press the Slideshow button to cycle through all the photos in the Pictures folder automatically.

Pan



If you enlarge an image beyond the screen boundaries, press the Pan button to enable image scrolling. While enabled, you can drag the image in any direction to view other areas of the image. Press the Pan button again to disable Pan mode.

Rotate Image



Press the Rotate Image button to rotate the image 90° counterclockwise, 90° clockwise, or 180°.

Next Image (right arrow)



Press the right arrow button to view the next image in the folder. This button is grayed out (not functional) when viewing the last image in the folder.

ESC



Press **ESC** to return to the folder list.

Manage Photos

List View

Press List view to show the files in a hierarchal list view.

Thumbnail

Press Thumbnail to show the files as thumbnails.

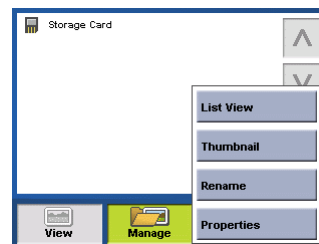
Rename

To change the name of the selected file or folder, press **Rename**.

Use the backspace key (<-) to erase the name; and the keypad to enter a new name for your file. When you have finished, select **OK**.

Properties

To view information on the selected file or folder, press **Properties**. A thumbnail of the image will be displayed along with the width and height in pixels, the size, and the format



(image type). When viewing the properties for folders, width, height, and format are not shown. Size shown is the combined size of all images in the selected folder.

When you are finished viewing the properties, select **OK**.

Tools

Preferences

General - The General preferences, you can set the default file view to either thumbnail or file list view.

Slideshow - The slideshow preferences enable you to set the view properties, the sequence of photos, the transition between photos, and the duration between photos.

Background - The background preferences enable you to set the color of the background behind the photo being viewed.

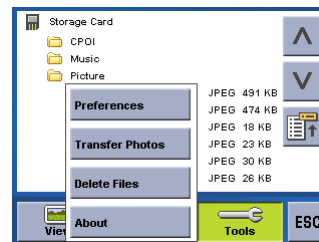
Delete Files

Use the arrow keys to select the file or folder you wish to delete. Press the **Delete** button (trash can).

A dialog box will appear asking to confirm your selection. Select **Yes** to delete the file.

About

This option will display the current version of the Photo Viewer software.



Contact Information

If you need support for your Magellan RoadMate 2200T and you wish to contact Magellan, please use the following information to direct your questions/comments to the proper person.

Technical Support

If you need technical assistance or “how-to” help, or if you have a technical question about the functionality of your Magellan product, please contact us on the Internet at **www.magellanGPS.com** or reach us by fax or by phone.

Our Technical Support phone representatives are available Monday through Friday, 6:00 a.m. to 5:00 p.m. PST/PDT. After hours, you may leave a detailed voice mail message that will be returned within the next business day.

Telephone: **(866) 868-2259** or **(909) 394-5000** (outside the United States)

You may also reach Technical Support by Fax: **(909) 494-7777** [Attn: Tech. Support]; or E-Mail: **magellansupport@magellanGPS.com**

Warranty Service

To obtain warranty service on your Magellan RoadMate 2200T, you must contact us for a return authorization (RA) before you ship the product. Packages arriving at our dock without an RA will be refused.

To obtain an RA, simply contact our Technical Support group at: Telephone: **(866) 868-2259** or **(909) 394-5000** (outside the United States); Fax: **(909) 394-7050** [Attn: Tech. Support]; or E-Mail: **magellansupport@magellanGPS.com**

Customer Service

If you need to order accessories or obtain unlock codes, you can call our Customer Service Department Monday through Friday, 6:00 a.m. to 5:00 p.m. PST/PDT, or visit our Web site at **www.magellanGPS.com**.

Telephone: **(866) 339-0488** or **(909) 394-5000** (outside the United States); Fax: **(909) 394-7078**.

Registration

Please make sure to register your Magellan RoadMate 2200T at **www.magellanGPS.com**. By registering, you will be informed of the latest product updates.